



WRAPPY 12S/12A

N. matricola • Serial number • Seriennummer
N.d'identification • Matricula n.

FASCIATRICE AD ANELLO ROTANTE
ROTATING RING BANDING MACHINE
VERPACKUNGSMASCHINE MIT DREHRING
MACHINE A CERCLER A BAGUE TOURNANTE
ENROLLADORA CON ANILLO ROTANTE

- ① CATALOGO RICAMBI
- Ⓒ SPARE PARTS LIST
- Ⓓ ERSATZTEILKATALOG
- Ⓕ CATALOGUE DES PIÈCES DÉTACHÉES
- Ⓔ CATALOGO RECAMBIOS

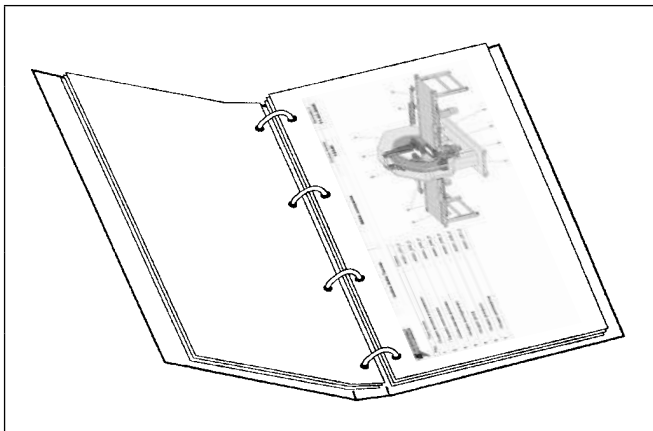
3710309473

Ed.: 01/2012

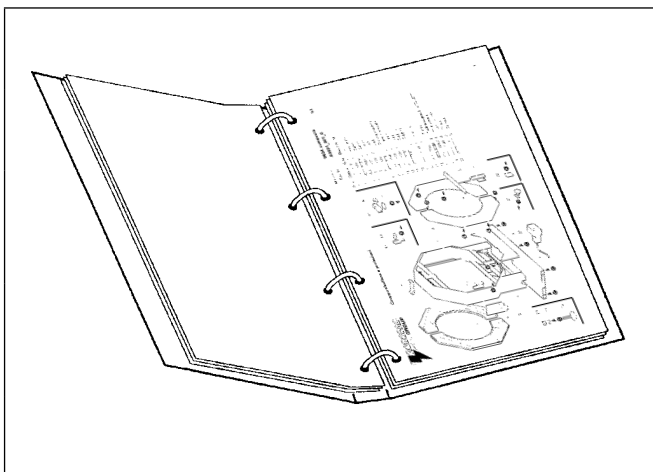




| | |
|-----------|---|
| I | Come consultare il catalogo delle parti di ricambio |
| GB | How to consult the spare parts catalogue |
| D | Benutzung des Ersatzteilkatalogs |
| F | Comment consulter le catalogue des pièces détachées |
| E | Cómo consultar el catálogo de las piezas de repuesto |



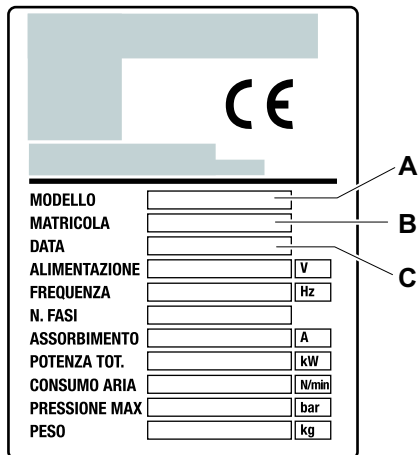
- I** Tramite l'indice figurativo, posto all'inizio del catalogo, si individua il numero di tavola relativa alla parte della macchina che interessa.
- GB** Use the illustration index at the beginning of the catalogue to identify the number of the table of the concerned machine part.
- D** Mittels des Bildindex am Anfang des Katalogs kann die Nummer der Tafel herausgefunden werden, die zu dem gesuchten Maschinenteil gehört.
- F** Grâce à l'index figuratif, placé au début du catalogue, on identifie le numéro de planche correspondant à la pièce de la machine intéressée.
- E** Con el índice figurativo, colocado al comienzo del catálogo, se identifica el número de tabla referida a la pieza de la máquina que interesa.



- I** Su ogni tavola, ad ogni particolare è attribuito un numero di riferimento. Nella tabella, ad ogni riferimento corrispondono tutti i dati necessari per l'ordinazione.
- GB** A reference number is assigned to each part in each table. Each reference in the table includes all the information required for ordering.
- D** Auf jeder Tafel ist jedem Einzelposten eine Referenznummer zugewiesen. In der Tabelle findet man zu jeder Bezugsnummer entsprechend alle zur Bestellung nötigen Daten.
- D** Sur chaque planche, à chaque pièce est attribuée un numéro de référence. Sur la planche, à chaque référence correspondent toutes les données nécessaires pour la commande.
- E** En cada tabla, a cada pieza se le atribuye un número de referencia. En la tabla, a cada referencia le corresponden todos los datos necesarios para el pedido.

| | |
|-----------|------------------------------------|
| I | NORME PER LE ORDINAZIONI |
| GB | ORDERING INSTRUCTIONS |
| D | NORMEN FÜR DIE BESTELLUNGEN |
| F | NORMES POUR LES COMMANDES |
| E | NORMAS PARA LOS PEDIDOS |

Targhetta di identificazione macchina
Machine identification plate



MODELLO

MATRICOLA

DATA

ALIMENTAZIONE V

FREQUENZA Hz

N. FASI

ASSORBIMENTO A

POTENZA TOT. kW

CONSUMO ARIA N/min

PRESSIONE MAX bar

PESO kg


A (points to MODELLO)


B (points to MATRICOLA)

C (points to ALIMENTAZIONE)


- I** Le ordinazioni delle parti di ricambio devono essere corredate dalle seguenti indicazioni:
1. Modello macchina (**A**)
 2. Matricola (**B**)
 3. Anno di produzione (**C**)
 4. Numero della tavola
 5. Numero di riferimento del particolare
 6. Numero di codice del particolare
 7. Quantità richiesta
 8. Modo di spedizione

- GB** Spare part orders must include the following information:
1. Machine model (**A**)
 2. Serial number (**B**)
 3. Year of manufacture (**C**)
 4. Table number
 5. Part reference number
 6. Part code number
 7. Required quantity
 8. Delivery method

 **Informazioni**
Per i componenti colorati specificare il colore desiderato.
Nota: Effettuare la richiesta dei ricambi compilando l'apposita scheda in ogni sua parte.

 **Information**
For coloured components, indicated the required colour
Note: Fully complete the specific form when ordering spare parts.

Identifikationsplakette der Maschine
Plaquette d'identification machine
Placa de identificación de la máquina

| | |
|---|----------------------------|
|  | |
| MODELLO | <input type="text"/> |
| MATRICOLA | <input type="text"/> |
| DATA | <input type="text"/> |
| ALIMENTAZIONE | <input type="text"/> V |
| FREQUENZA | <input type="text"/> Hz |
| N. FASI | <input type="text"/> |
| ASSORBIMENTO | <input type="text"/> A |
| POTENZA TOT. | <input type="text"/> kW |
| CONSUMO ARIA | <input type="text"/> N/min |
| PRESSIONE MAX | <input type="text"/> bar |
| PESO | <input type="text"/> kg |

D Die Bestellungen von Ersatzteilen müssen nach folgenden Angaben erstellt werden.

1. Maschinenmodell (A)
2. Seriennummer(B)
3. Baujahr (C)
4. Tafelnummer
5. Referenznummer des Einzelteils
6. Codenummer des Einzelteils
7. Gewünschte Menge
8. Versandart

F Les commandes de pièces détachées doivent être accompagnées des indications suivantes:

1. Modèle machine (A)
2. Matricule (B)
3. Année de production (C)
4. Numéro de la planche
5. Numéro de référence de la pièce
6. Numéro de code de la pièce
7. Quantité requise
8. Moyen d'expédition

E Los pedidos de las piezas de repuesto deben ir acompañados de las siguientes indicaciones:

1. Modelo máquina (A)
2. Número de matrícula(B)
3. Año de producción(C)
4. Número de la tabla
5. Número de referencia de la pieza
6. Número de código de la pieza
7. Cantidad solicitada
8. Modo de envío



Informationen

Bei farbigen Komponenten bitte die gewünschte Farbe angeben.

Anmerkung: Die Anforderung der Ersatzteile durch Ausfüllen des entsprechenden Blattes in jedem seiner Teile ausführen.



Informations

Pour les composants colorés spécifier la couleur souhaitée.

Note: Effectuer la demande de pièces détachées en compilant entièrement la fiche correspondante.



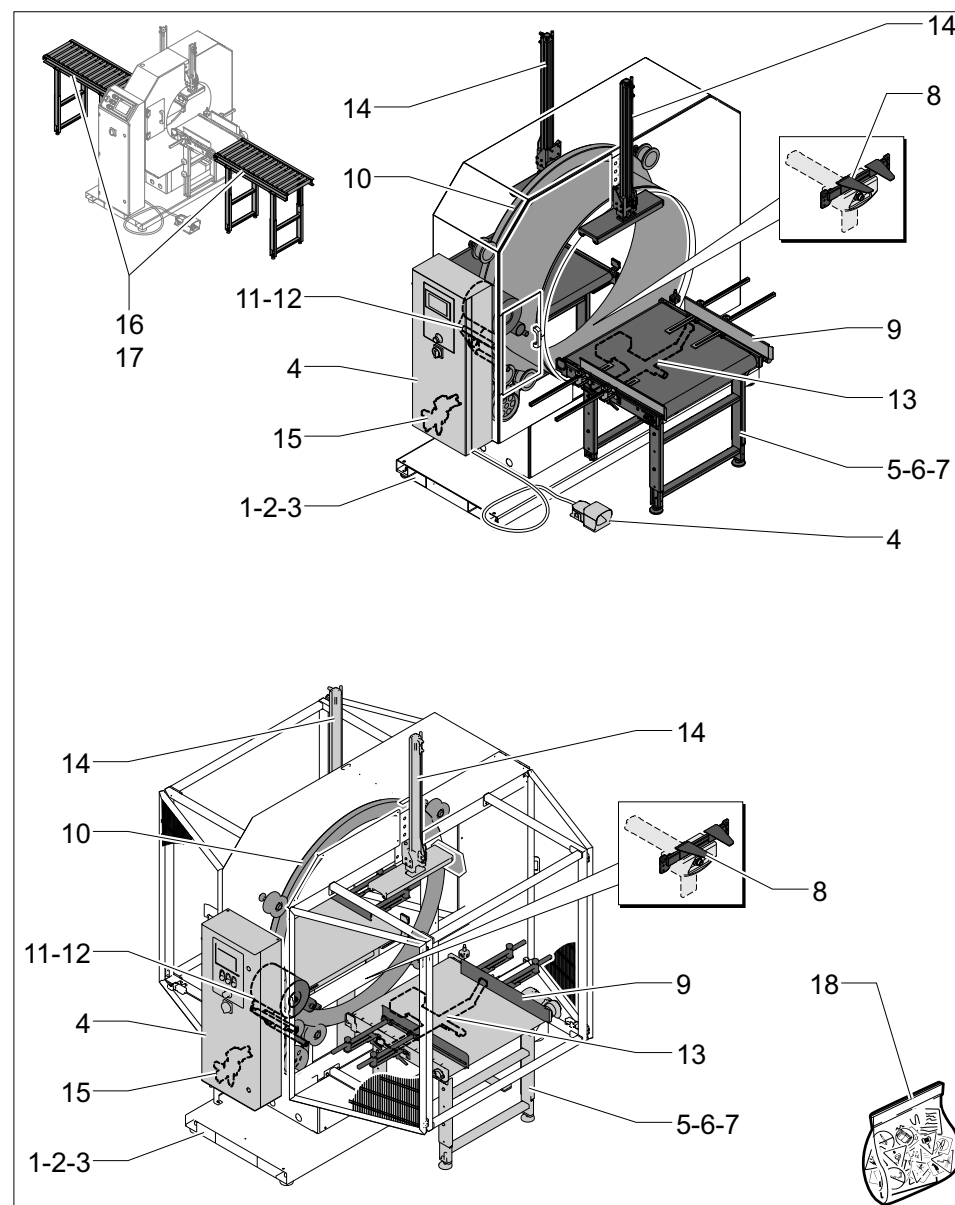
Información

Para los componentes coloreados especificar el color deseado

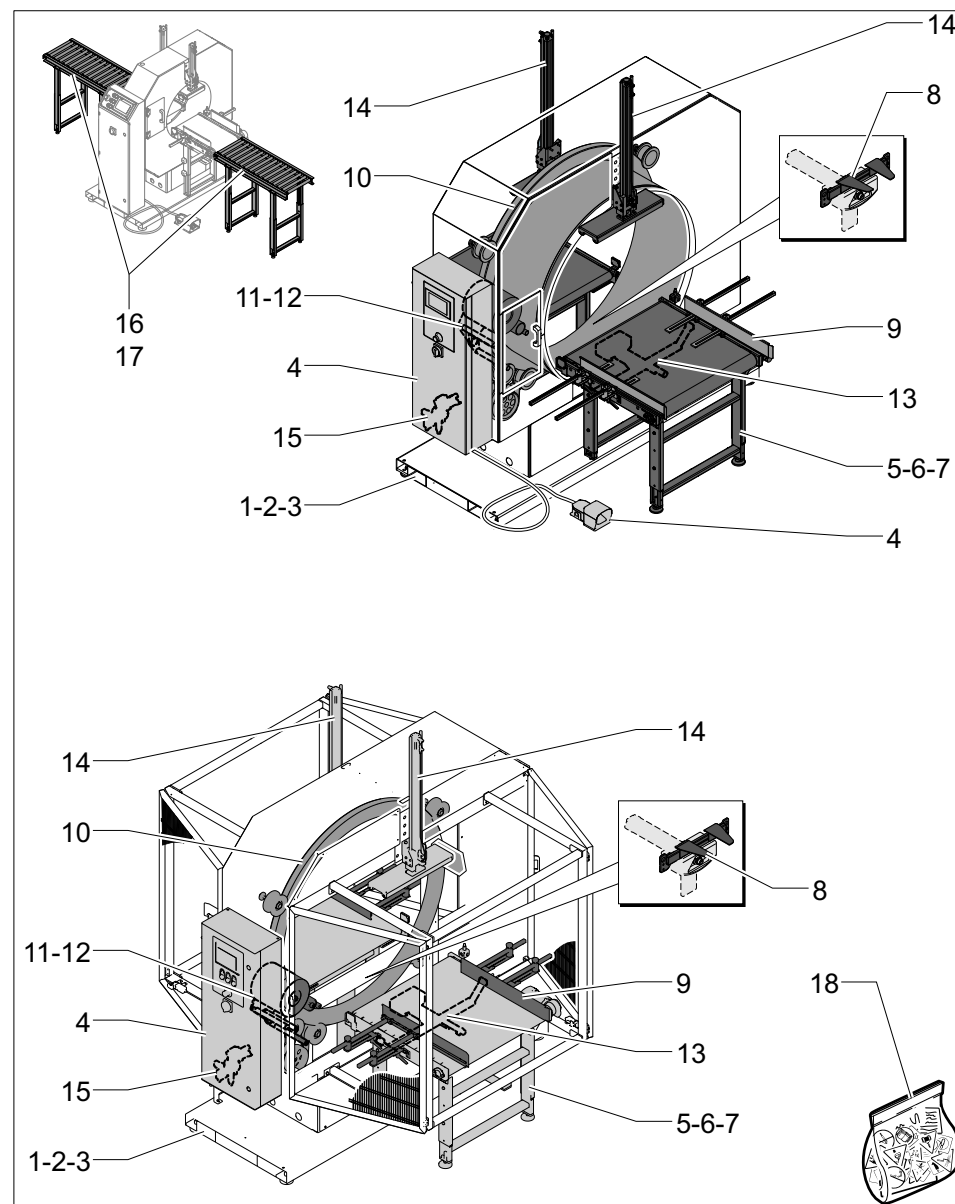
Nota: Efectuar el pedido de repuestos completando toda la ficha.



| Rif. | Tavola Planche Tafel Tabla | Table heading Titre planche Titel der Tafel | |
|------|-------------------------------------|---|---|
| 1 | A1209_001 | Gruppo struttura e protezioni Gruppe Aufbau und Schutzvorrichtungen Grupo estructura y protecciones 12S | Machine body and protections Groupe structure et protections pag.: 13 |
| 2 | A1209_002 | Gruppo struttura e protezioni Gruppe Aufbau und Schutzvorrichtungen Grupo estructura y protecciones 12A | Machine body and protections Groupe structure et protections pag.: 14 |
| 3 | A1209_003 | Gruppo struttura e protezioni Gruppe Aufbau und Schutzvorrichtungen Grupo estructura y protecciones 12A | Machine body and protections Groupe structure et protections pag.: 15 |
| 4 | A1106_015 | Quadro elettrico Elektr. tafel Quadro electrico BOB.250 | Electrical board Tableau électrique pag.: 16 |
| 5 | A1108_003 | Gruppo alimentazione a nastro Bandzuführungsgruppe Grupo alimentación de cinta L:850 W:815 | Belt infeed unit Groupe alimentation à bande pag.: 17 |
| 6 | A1108_004 OPT | Gruppo alimentazione a nastro Bandzuführungsgruppe Grupo alimentación de cinta L:1500 W:815 | Belt infeed unit Groupe alimentation à bande pag.: 18 |
| 7 | A1108_013 OPT | Gruppo alimentazione a nastro Bandzuführungsgruppe Grupo alimentación de cinta L:1500 W:1100 H:1100 | Belt infeed unit Groupe alimentation à bande pag.: 19 |
| 8 | A1108_010 OPT | Gruppo ponte Bruecke-gruppe Grupo puente W:815/1100 | Bridge unit Groupe pont pag.: 20 |
| 9 | A1108_005 OPT | Gruppo guida laterale Gruppe Seitenführungen Grupo guía lateral L:850/1500 | Side guide unit Groupe guide latéral pag.: 21 |



| Rif. | Tavola Planche Tafel Tabla | Table heading Titre planche Título tabla | Table heading Titel der Tafel | |
|------|-------------------------------------|---|--|----------|
| 10 | A1105_007 | Gruppo avvolgimento Umwickelgruppe Grupo envoltura BOB. 250 | Wrapping unit Groupe banderolage | pag.: 22 |
| 11 | A1105_011 | Gruppo portabobina + Rullo ballerino Folienrollengruppe + Schwingen roll Grupo portabobina + Rodillo oscilante BOB. 250 | Spool carriage + Swinging roll Gr. porte-bobine + Rouleau oscillant | pag.: 23 |
| 12 | A1105_010 OPT | Gruppo portabobina Folienrollengruppe Grupo portabobina BOB. 250 | Spool carriage Groupe porte-bobine | pag.: 25 |
| 13 | A1108_006 | Gruppo pinza/taglio Spannzangen/schneide-einheit Grupo pinza/corte W: 850/1100 | Pliers/cutting unit Groupe pince/deco upage | pag.: 26 |
| 14 | A1108_007 | Gruppo pressore Niederhaltergruppe Grupo presor L: 600/800 | Pressure platen unit Groupe presseur | pag.: 27 |
| 15 | A1108_009 | Impianto pneumatico Pneumatische anlage Instalacion neumatica | Pneumatic system Circuit pneumatique | pag.: 28 |
| 16 | A1108_011 OPT | Gruppo convogliatore (Rulli) Einheit förderer (Rollen) Grupo transportador (Rodillos) L: 1000 | Conveyor unit (Rollers) Groupe convoyeur (Rouleaux) | pag.: 29 |
| 17 | A1108_012 OPT | Gruppo convogliatore (Rulli) Einheit förderer (Rollen) Grupo transportador (Rodillos) L: 2000 | Conveyor unit (Rollers) Groupe convoyeur (Rouleaux) | pag.: 30 |
| 18 | A1209_004 | Kit targhette Schild Kit placas | Plate kit Kit de plaquettes | pag.: 31 |





Gruppo struttura e protezioni
 Gruppe Aufbau und Schutzvorrichtungen
 Grupo estructura y protecciones

Machine body and protections
 Groupe structure et protections

Macchina
 Maschine
 Máquina

Machine
 Machine
 Machine

WRAPPY 12S/12A

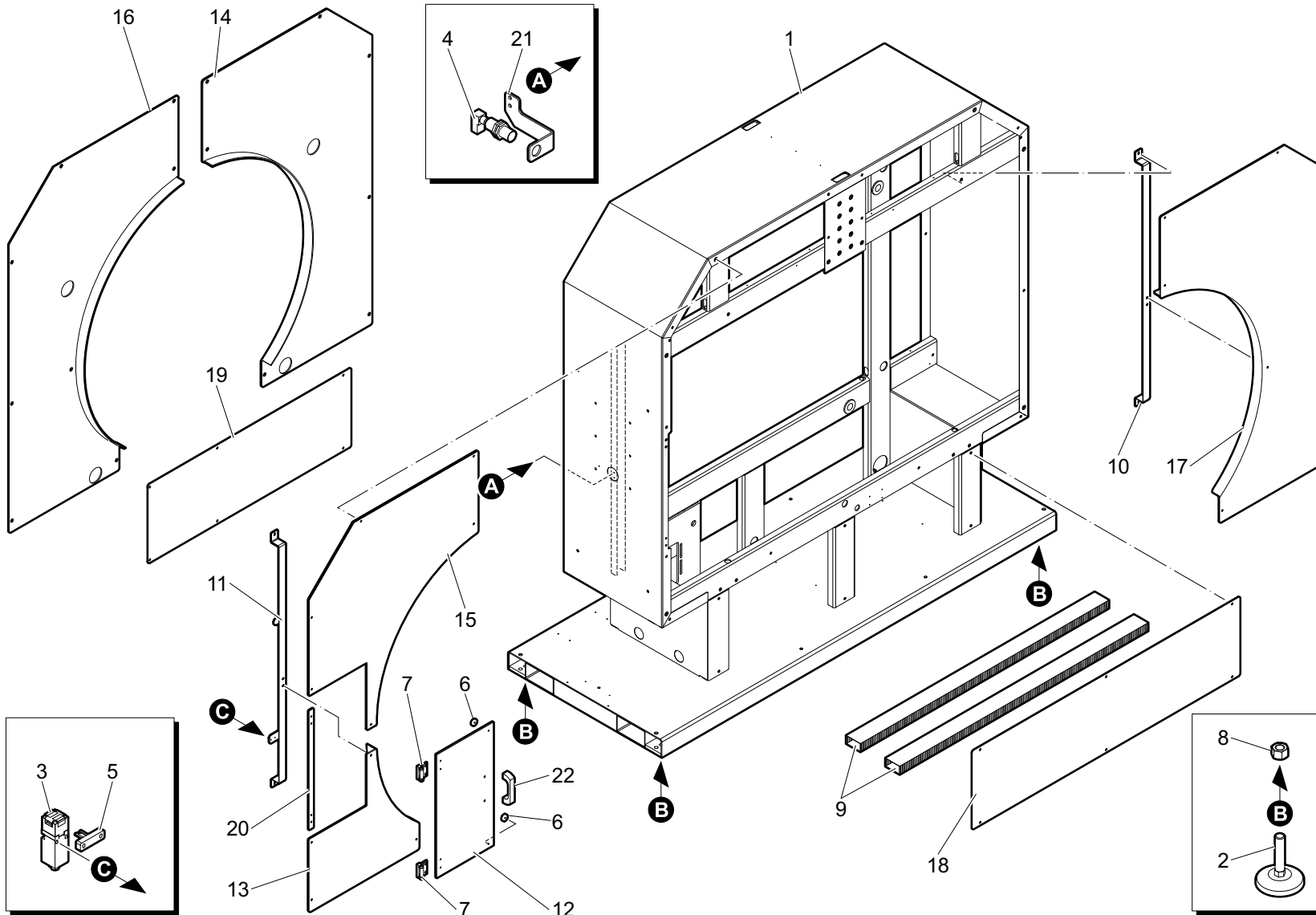
12S

Tavola
 Planche
 Tabla

Table
 Tafel

A1209_001

1/1



Variante rif. codice

| | |
|----|------------|
| 1 | 7210300044 |
| 2 | 0000636584 |
| 3 | 0001300998 |
| 4 | 0001309154 |
| 5 | 0001309918 |
| 6 | 0001310969 |
| 7 | 0001310970 |
| 8 | 0000301543 |
| 9 | 0001347537 |
| 10 | 3830300102 |
| 11 | 3830300103 |
| 12 | 4250301178 |
| 13 | 4250301285 |
| 14 | 4250301286 |
| 15 | 4250301287 |
| 16 | 4250301288 |
| 17 | 4250301289 |
| 18 | 4940301028 |
| 19 | 4940301029 |
| 20 | 5030300048 |
| 21 | 5740300617 |
| 22 | 0000619691 |



Gruppo struttura e protezioni
 Gruppe Aufbau und Schutzvorrichtungen
 Grupo estructura y protecciones

Machine body and protections
 Groupe structure et protections

Macchina
 Maschine
 Máquina

WRAPPY 12S/12A

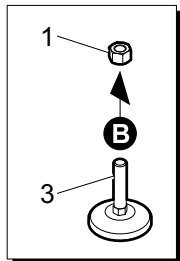
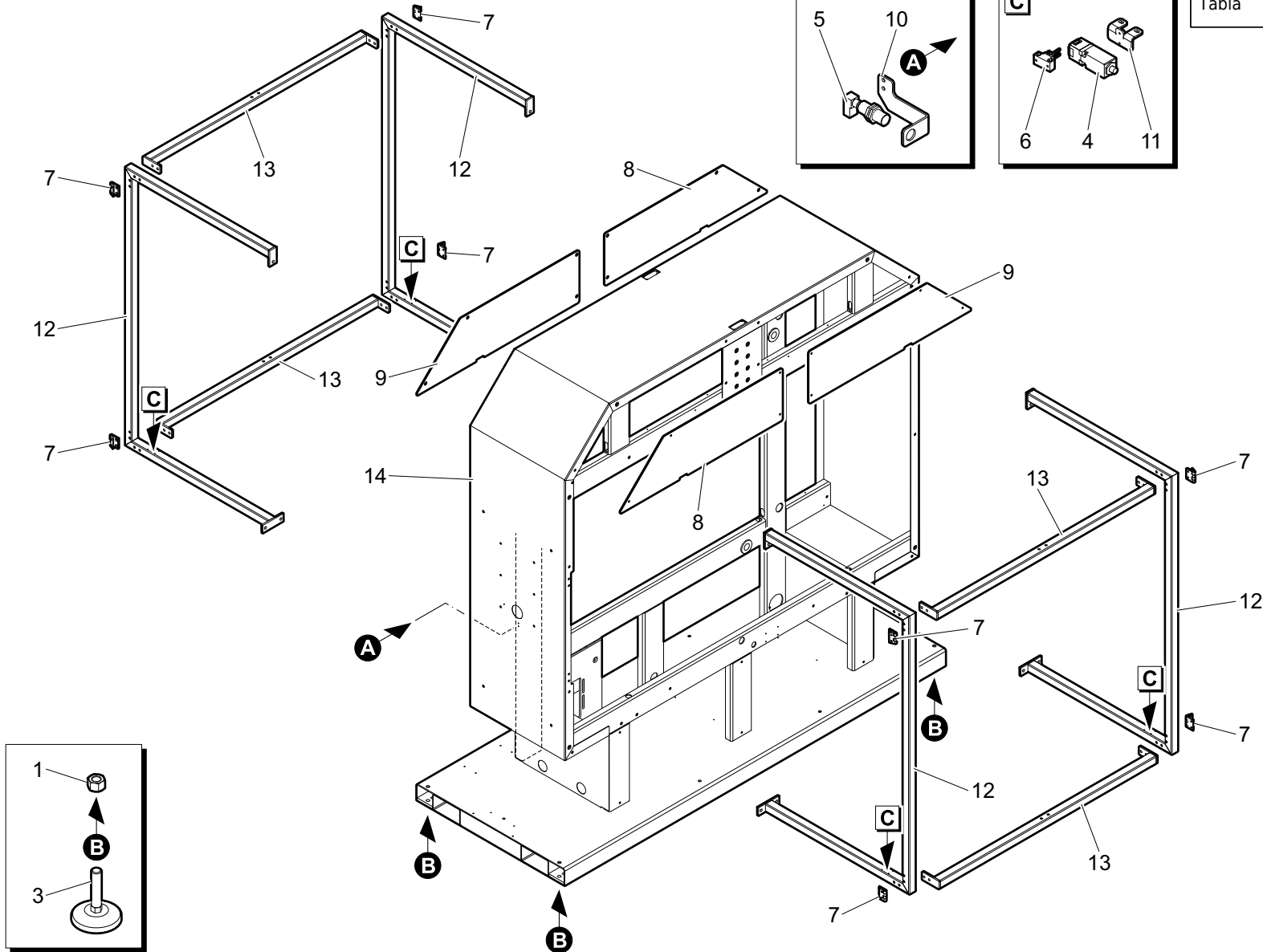
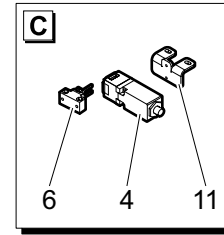
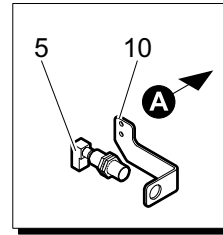
Tavola
 Planché
 Tabla

Table
 Tafel

A1209_002

1/1

12A



Variante rif. codice

| | |
|----|------------|
| 1 | 0000301543 |
| 3 | 0000636584 |
| 4 | 0001300998 |
| 5 | 0001309154 |
| 6 | 00L0035391 |
| 7 | 0580510015 |
| 8 | 4250301227 |
| 9 | 4250301228 |
| 10 | 5740300617 |
| 11 | 5830300548 |
| 12 | 6040300508 |
| 13 | 6130300201 |
| 14 | 7210300044 |



Gruppo struttura e protezioni
 Gruppe Aufbau und Schutzvorrichtungen
 Grupo estructura y protecciones

Machine body and protections
 Groupe structure et protections

Macchina
 Maschine
 Máquina

Machine
 Machine

WRAPPY 12S/12A

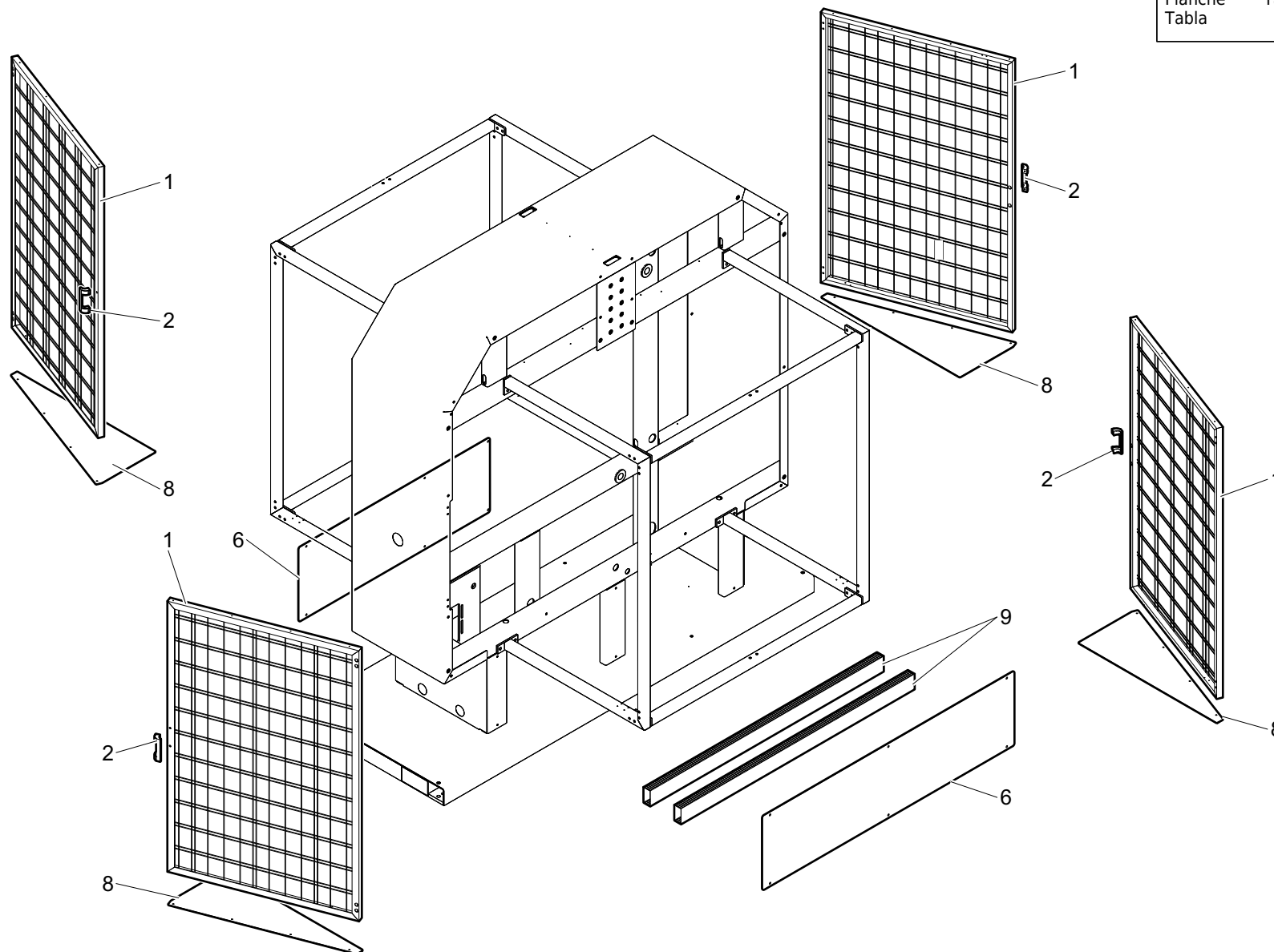
12A

Tavola
 Planche
 Tabla

Table
 Tafel

A1209_003

1/1



Variante rif. codice

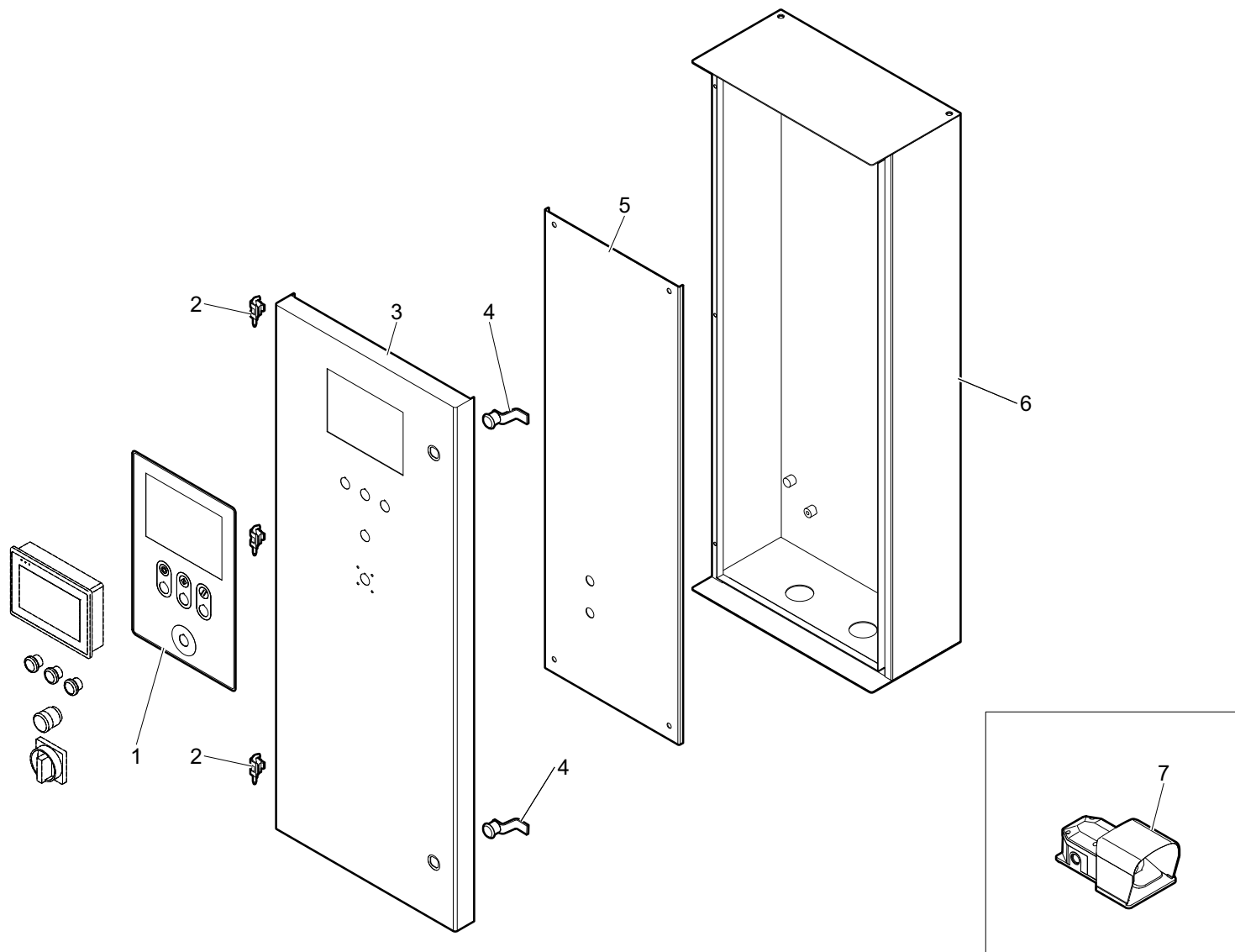
| | |
|---|------------|
| 1 | 5560300376 |
| 2 | 00L0031656 |
| 6 | 4940301028 |
| 7 | 4940301029 |
| 8 | 4940301069 |
| 9 | 0001347537 |



| | | | | | |
|---|--|---------------------------------|--------------------|-----------------------|------------|
| Quadro elettrico Elektr. tafel Quadro electrico | Electrical board Tableau électrique | Macchina Maschine Máquina | Machine Machine | WRAPPY 12S/12A | |
| BOB.250 | | Tavola Planche Tabla | Table Tafel | A1106_015 | 1/1 |

Variante rif. codice

| | |
|---|------------|
| 1 | 5920300668 |
| 2 | 0000626478 |
| 3 | 5210300295 |
| 4 | 0000626647 |
| 5 | 4940300821 |
| 6 | 4280300154 |
| 7 | 0622300001 |





Gruppo alimentazione a nastro
Bandzuführungsgruppe
Grupo alimentación de cinta

Belt infeed unit
Groupe alimentation à bande

Macchina
Maschine
Máquina

Machine
Machine
Machine

WRAPPY 12S/12A

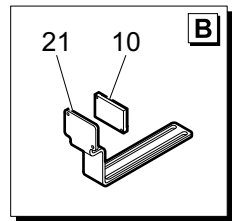
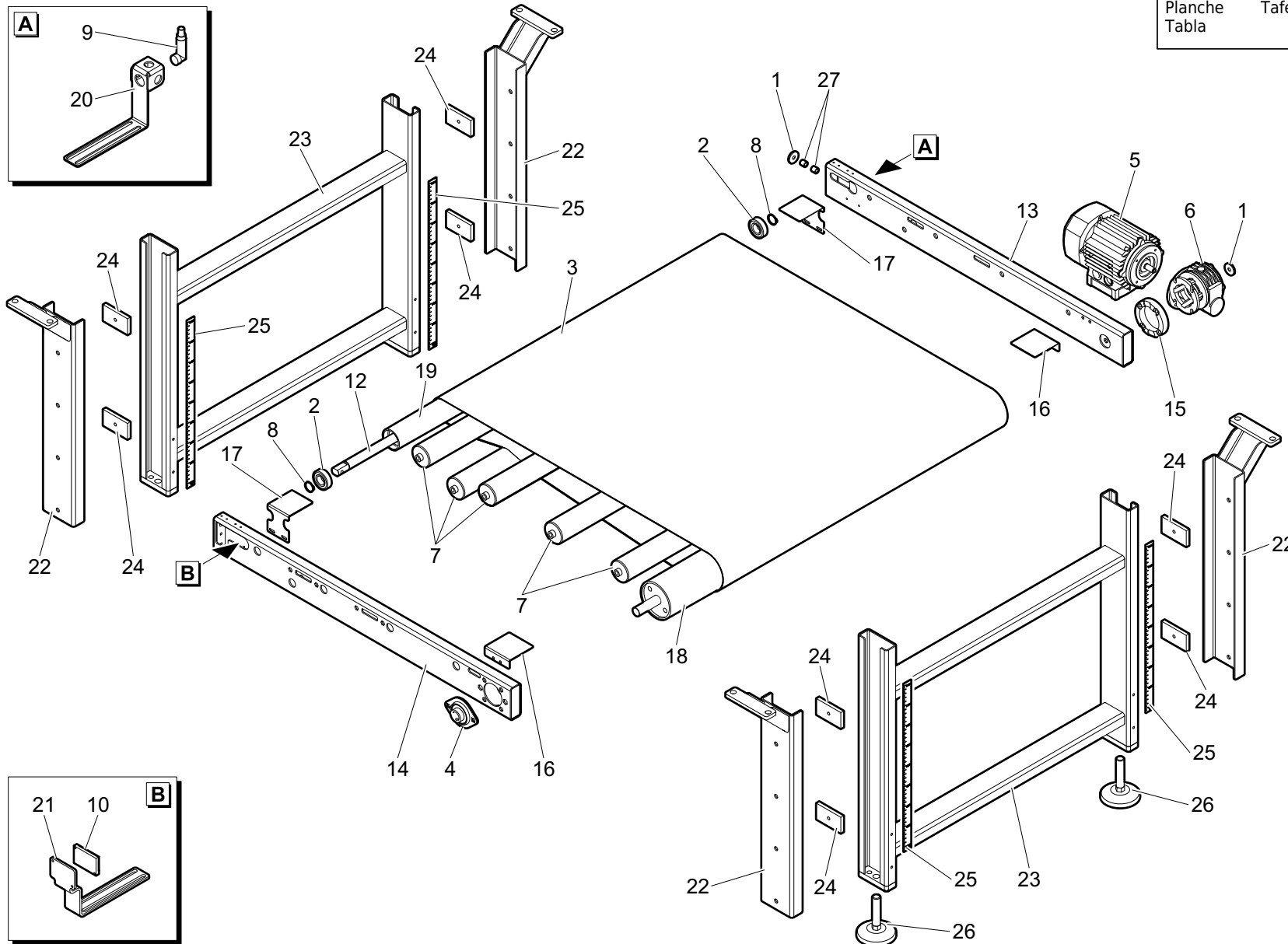
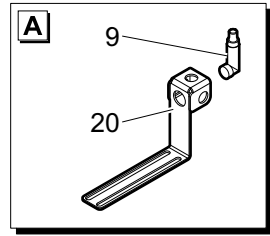
L:850 W:815

Tavola
Planche
Tabla

Table
Tafel

A1108_003

1/1



Variante rif. codice

| | | |
|------------|----|------------|
| | 1 | 0000305479 |
| | 2 | 0000606100 |
| | 3 | 0000609975 |
| | 4 | 0000613239 |
| | 5 | 2212300009 |
| IN | 6 | 0000638127 |
| OUT | 6 | 0000641244 |
| | 7 | 0000641455 |
| | 8 | 0000644268 |
| | 9 | 0001310180 |
| | 10 | 0001310195 |
| | 11 | 2212300005 |
| | 12 | 3740300275 |
| | 13 | 4610300376 |
| | 14 | 4610300377 |
| | 15 | 4730300058 |
| | 16 | 4940300939 |
| | 17 | 4940300963 |
| | 18 | 5650300310 |
| | 19 | 5651300178 |
| | 20 | 5740300451 |
| | 21 | 5740300452 |
| | 22 | 5740300574 |
| | 23 | 6040300468 |
| | 24 | 5330300546 |
| | 25 | 5920300606 |
| | 26 | 0000636584 |
| | 27 | 0000626764 |



Gruppo alimentazione a nastro
 Bandzuführungsgruppe
 Grupo alimentación de cinta

Belt infeed unit
 Groupe alimentation à bande

Macchina
 Maschine
 Máquina

WRAPPY 12S/12A

OPT

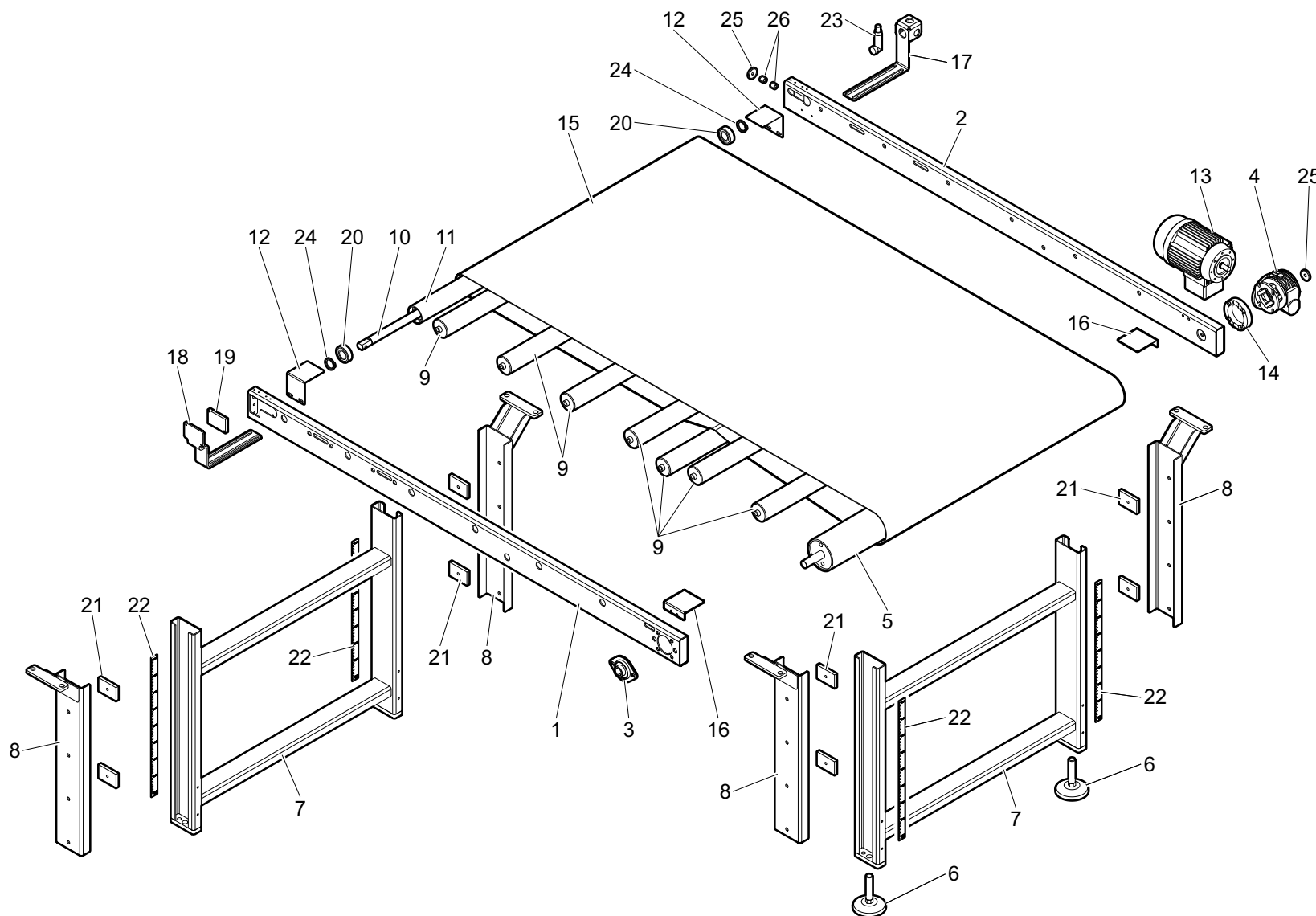
L:1500 W:815

Tavola
 Planché
 Tabla

Table
 Tafel

A1108_004

1/1



Variante rif. codice

| | |
|--------------|------------|
| 1 | 4610300370 |
| 2 | 4610300371 |
| 3 | 0000613239 |
| IN 4 | 0000638127 |
| OUT 4 | 0000641244 |
| 5 | 5650300310 |
| 6 | 0000636584 |
| 7 | 6040300468 |
| 8 | 5740300574 |
| 9 | 0000641455 |
| 10 | 3740300275 |
| 11 | 5651300178 |
| 12 | 4940300963 |
| 13 | 2212300005 |
| 14 | 4730300058 |
| 15 | 0000609791 |
| 16 | 4940300939 |
| 17 | 5740300451 |
| 18 | 5740300452 |
| 19 | 0001310195 |
| 20 | 0000606100 |
| 21 | 5330300546 |
| 22 | 5920300606 |
| 23 | 0001310180 |
| 24 | 0000644268 |
| 25 | 0000305479 |
| 26 | 0000626764 |



Gruppo alimentazione a nastro
 Bandzuführungsgruppe
 Grupo alimentación de cinta

Belt infeed unit
 Groupe alimentation à bande

Macchina
 Maschine
 Máquina

Machine
 Machine

WRAPPY 12S/12A

OPT

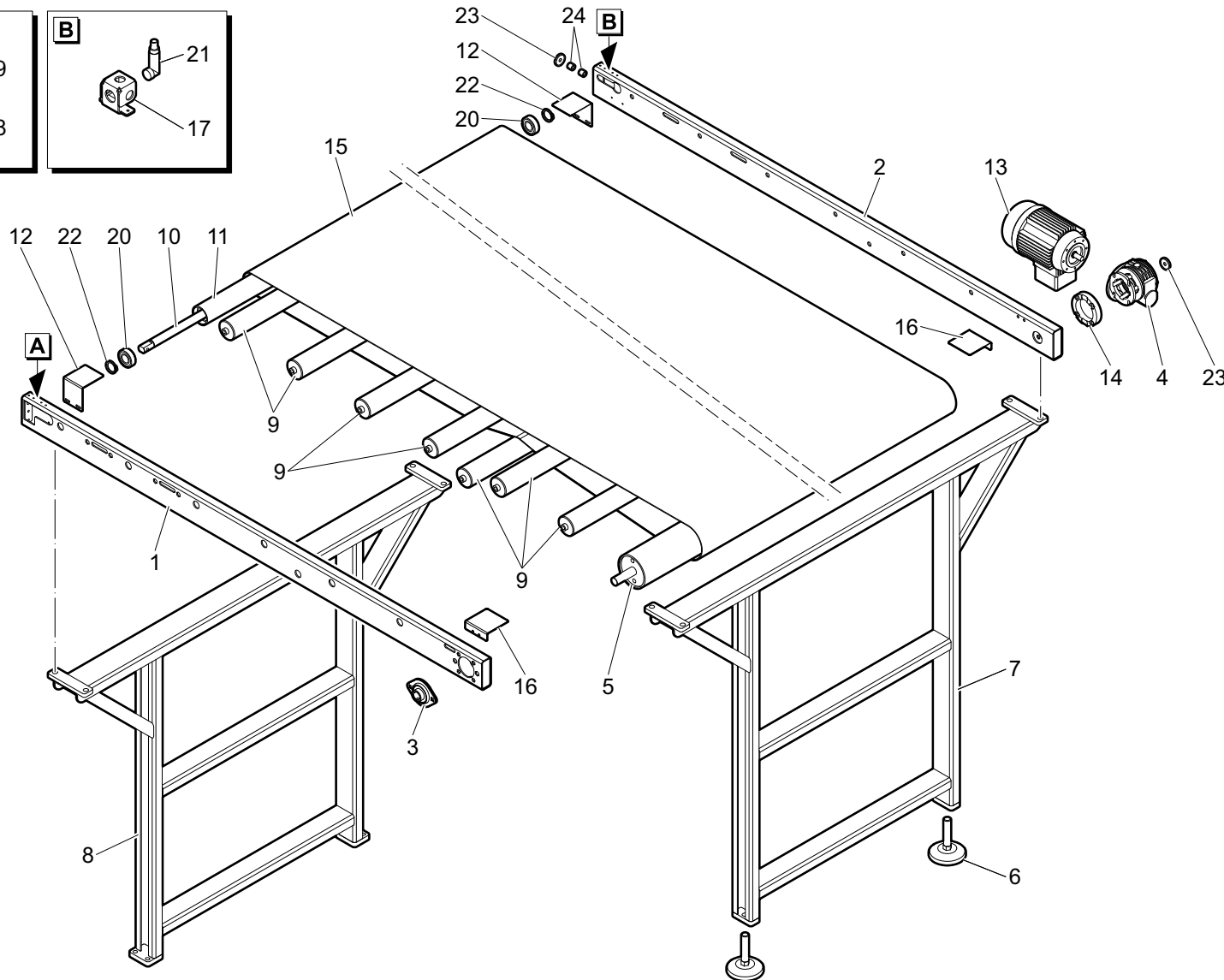
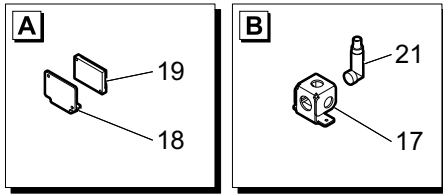
L:1500 W:1100 H:1100

Tavola
 Planche
 Tabla

Table
 Tafel

A1108_013

1/1



Variante rif. codice

| | | |
|------------|----|------------|
| | 1 | 4610300370 |
| | 2 | 4610300371 |
| | 3 | 0000613239 |
| IN | 4 | 0000638127 |
| OUT | 4 | 0000641244 |
| | 5 | 5650300305 |
| | 6 | 0000636584 |
| | 7 | 6040300470 |
| | 8 | 6040300469 |
| | 9 | 0000641935 |
| | 10 | 3740300383 |
| | 11 | 5651300239 |
| | 12 | 4940300963 |
| | 13 | 2212300005 |
| | 14 | 4730300058 |
| | 15 | 0000609813 |
| | 16 | 4940300939 |
| | 17 | 5740300477 |
| | 18 | 5740300478 |
| | 19 | 0001310195 |
| | 20 | 0000606100 |
| | 21 | 0001310180 |
| | 22 | 0000644268 |
| | 23 | 0000305479 |
| | 24 | 0000626764 |



| | | | | | |
|--|----------------------------|---------------------------------|--------------------|-----------------------|------------|
| Gruppo ponte Bruecke-gruppe Grupo puente | Bridge unit Groupe pont | Macchina Maschine Máquina | Machine Machine | WRAPPY 12S/12A | |
| OPT | W:815/1100 | Tavola Planche Tabla | Table Tafel | A1108_010 | 1/1 |

Variante rif. codice

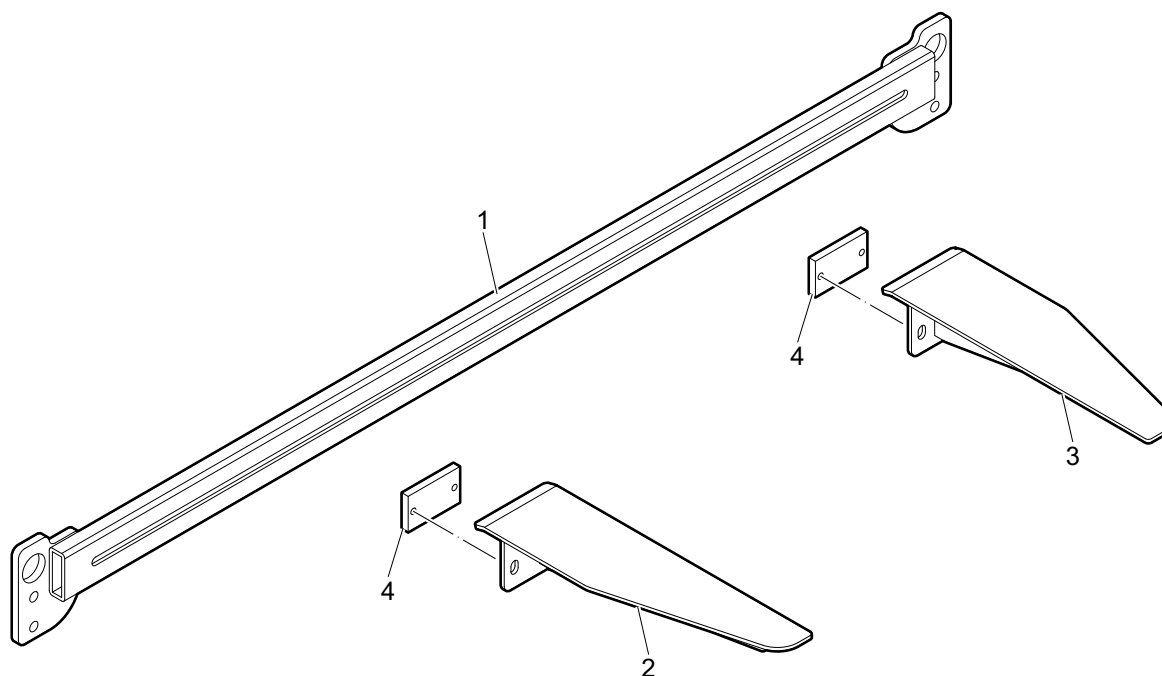
W:815 1 5890301088

W:1100 1 5890301089

BOB.250 2 4940300866

BOB.250 3 4940300865

4 5330300478





Gruppo guida laterale
 Gruppe Seitenführungen
 Grupo guía lateral

Side guide unit
 Groupe guide latéral

Macchina
 Maschine
 Máquina

Machine
 Machine

WRAPPY 12S/12A

OPT

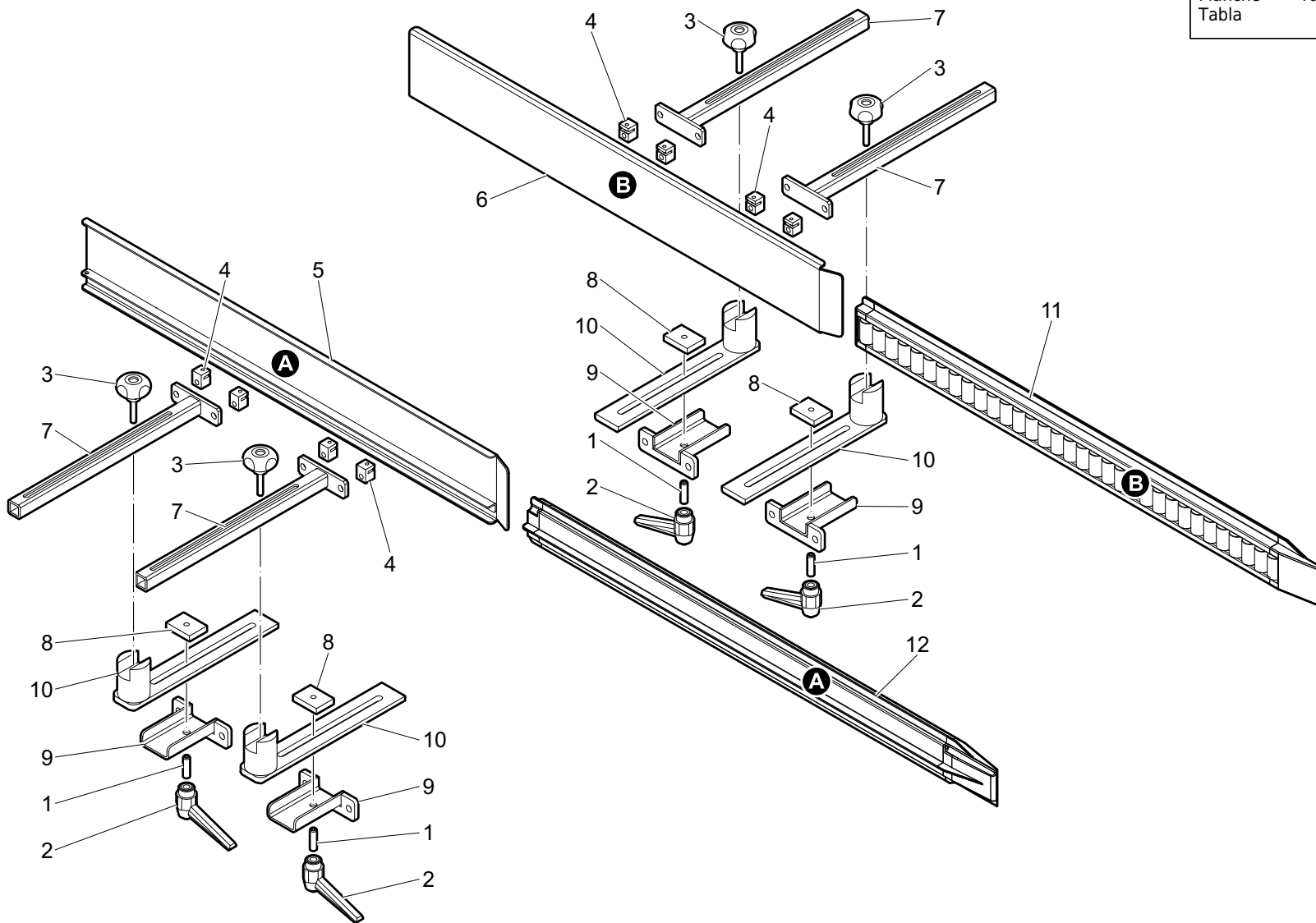
L:850/1500

Tavola
 Planche
 Tabla

Table
 Tafel

A1108_005

1/1



Variante rif. codice

| | |
|----|------------|
| 1 | 0000304245 |
| 2 | 0000619255 |
| 3 | 0000619837 |
| 4 | 3980300102 |
| 5 | 4820300550 |
| 6 | 4820300551 |
| 7 | 4820300612 |
| 8 | 5340300296 |
| 9 | 5740300557 |
| 10 | 5740300631 |
| 11 | 0000641550 |
| 12 | 0000641551 |



Gruppo avvolgimento
Umwickelgruppe
Grupo envoltura

Wrapping unit
Groupe banderolage

Macchina
Maschine
Máquina

Machine
Machine
Machine

WRAPPY 12S/12A

BOB.250

Tavola
Planche
Tabla

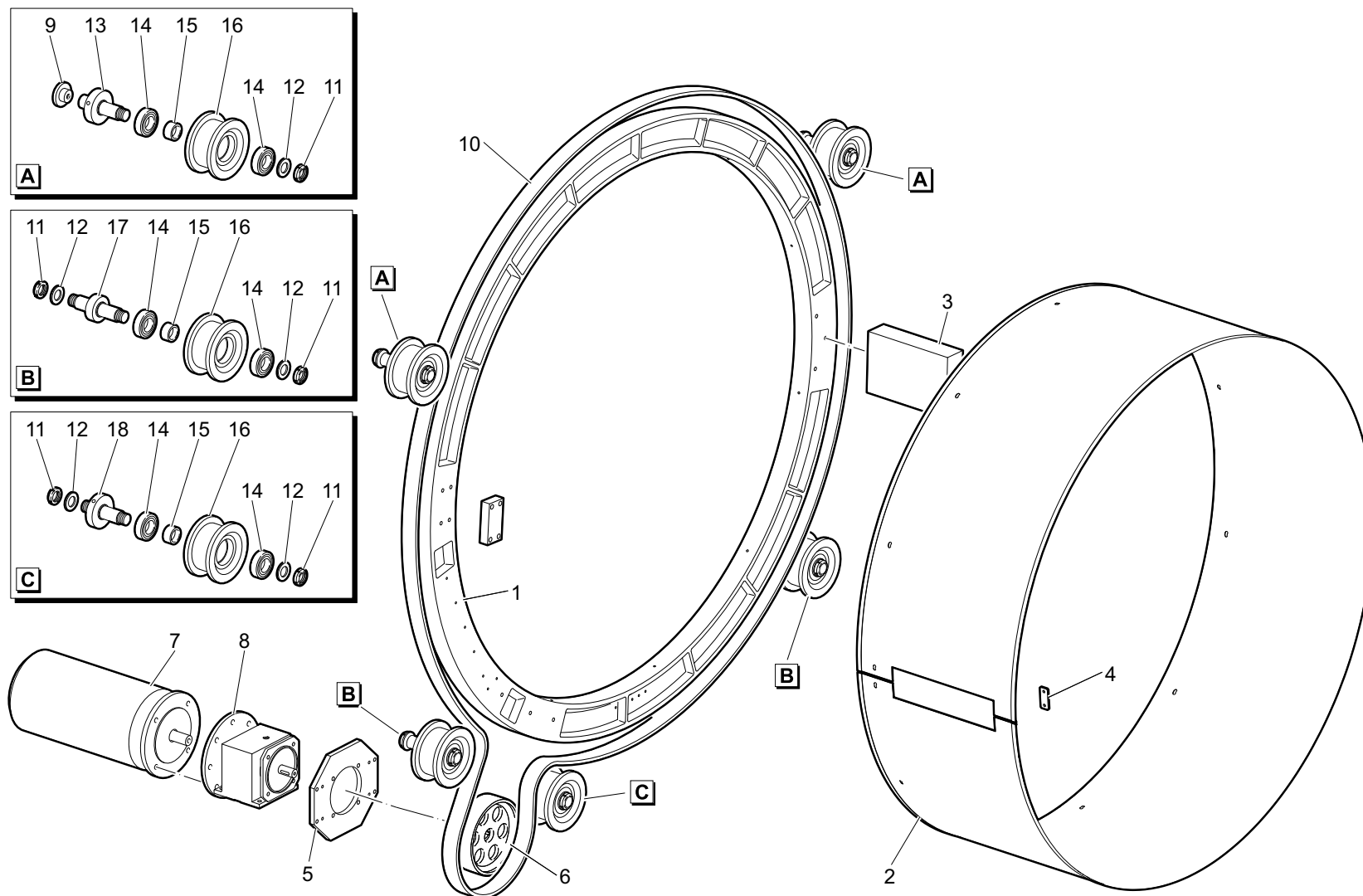
Table
Tafel

A1105_007

1/1

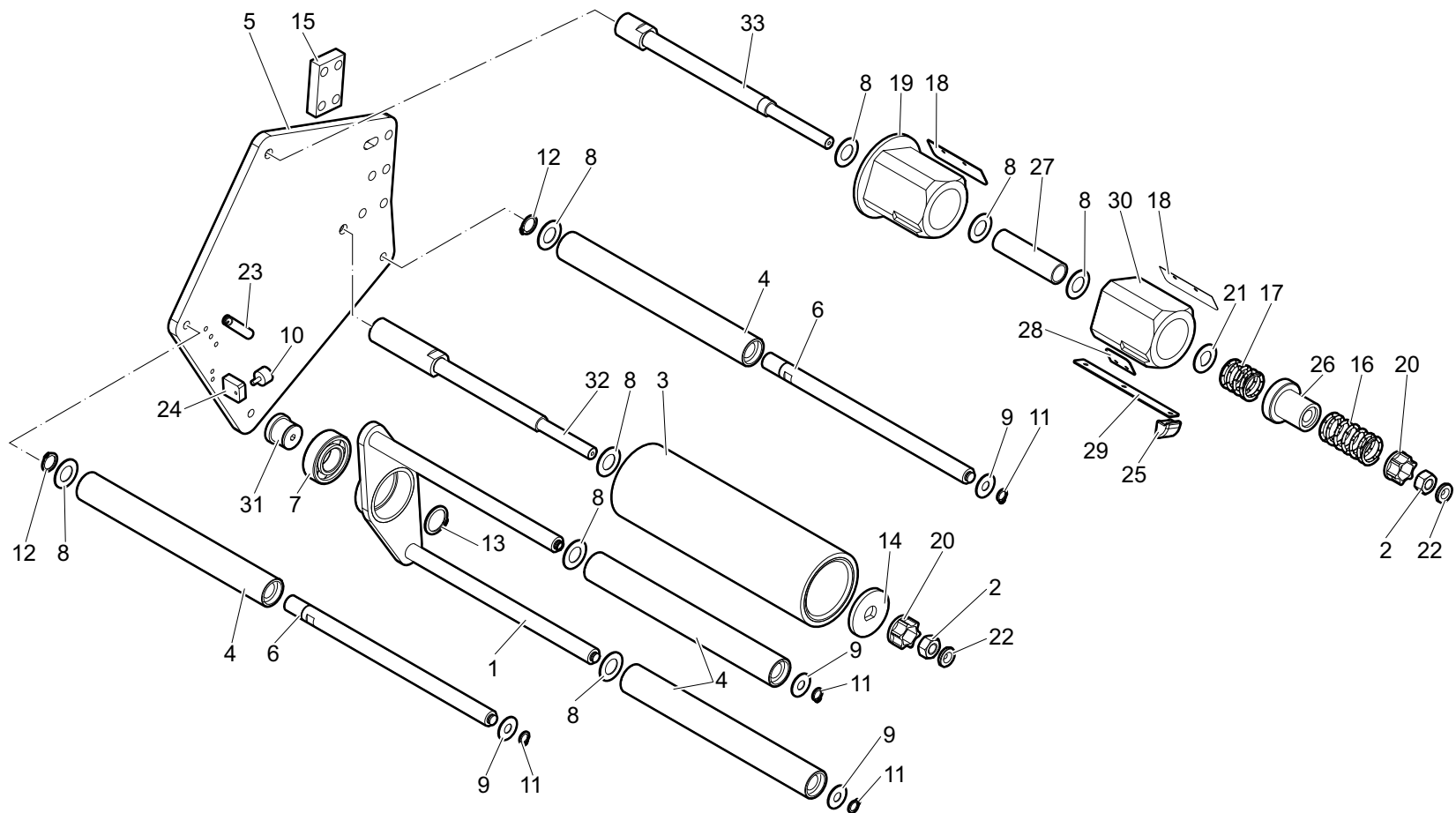
Variante rif. codice

| | |
|----|------------|
| 1 | 5590300016 |
| 2 | 3770300076 |
| 3 | 4430300019 |
| 4 | 0380500175 |
| 5 | 5330300465 |
| 6 | 5400300057 |
| 7 | 0001317252 |
| 8 | 0000637093 |
| 9 | 4040300041 |
| 10 | 0000605813 |
| 11 | 0000301852 |
| 12 | 0000613050 |
| 13 | 5270300447 |
| 14 | 0000606111 |
| 15 | 4550300162 |
| 16 | 5651300163 |
| 17 | 5270300444 |
| 18 | 5270300445 |





| | | | | | |
|--|--|---------------------------------|-------------------------------|-----------------------|------------|
| Gruppo portabobina + Rullo ballerino Folienrollengruppe + Schwingen roll Grupo portabobina + Rodillo oscilante | Spool carriage + Swinging roll Gr. porte-bobine + Rouleau oscillant | Macchina Maschine Máquina | Machine Machine Machine | WRAPPY 12S/12A | |
| BOB.250 | | Tavola Planche Tabla | Table Tafel | A1105_011 | 1/2 |



| Variante rif. | codice |
|---------------|------------|
| 1 | 6040300488 |
| 2 | 0000301421 |
| 3 | 5651300297 |
| 4 | 5651300184 |
| 5 | 5330300610 |
| 6 | 5270300739 |
| 7 | 0000606110 |
| 8 | 0000613044 |
| 9 | 0000613073 |
| 10 | 0000624338 |
| 11 | 0000644258 |
| 12 | 0000644264 |
| 13 | 0000644273 |
| 14 | 0380290105 |
| 15 | 0380300145 |
| 16 | 0380530115 |
| 17 | 0380530125 |
| 18 | 0380530554 |
| 19 | 0380540074 |
| 20 | 0380630044 |
| 21 | 0380680024 |
| 22 | 0380680035 |
| 23 | 0381530043 |
| 24 | 3980300121 |
| 25 | 4460300001 |
| 26 | 4550300268 |
| 27 | 4550300271 |
| 28 | 5123300010 |
| 29 | 5123300011 |
| 30 | 5180300014 |
| 31 | 5270300706 |



Gruppo portabobina + Rullo ballerino
 Folienrollengruppe + Schwingen roll
 Grupo portabobina + Rodillo oscilante

Spool carriage + Swinging roll
 Gr. porte-bobine + Rouleau oscillant

Macchina
 Maschine
 Máquina

Machine
 Machine
 Machine

WRAPPY 12S/12A

BOB.250

Tavola
 Planche
 Tabla

Table
 Tafel

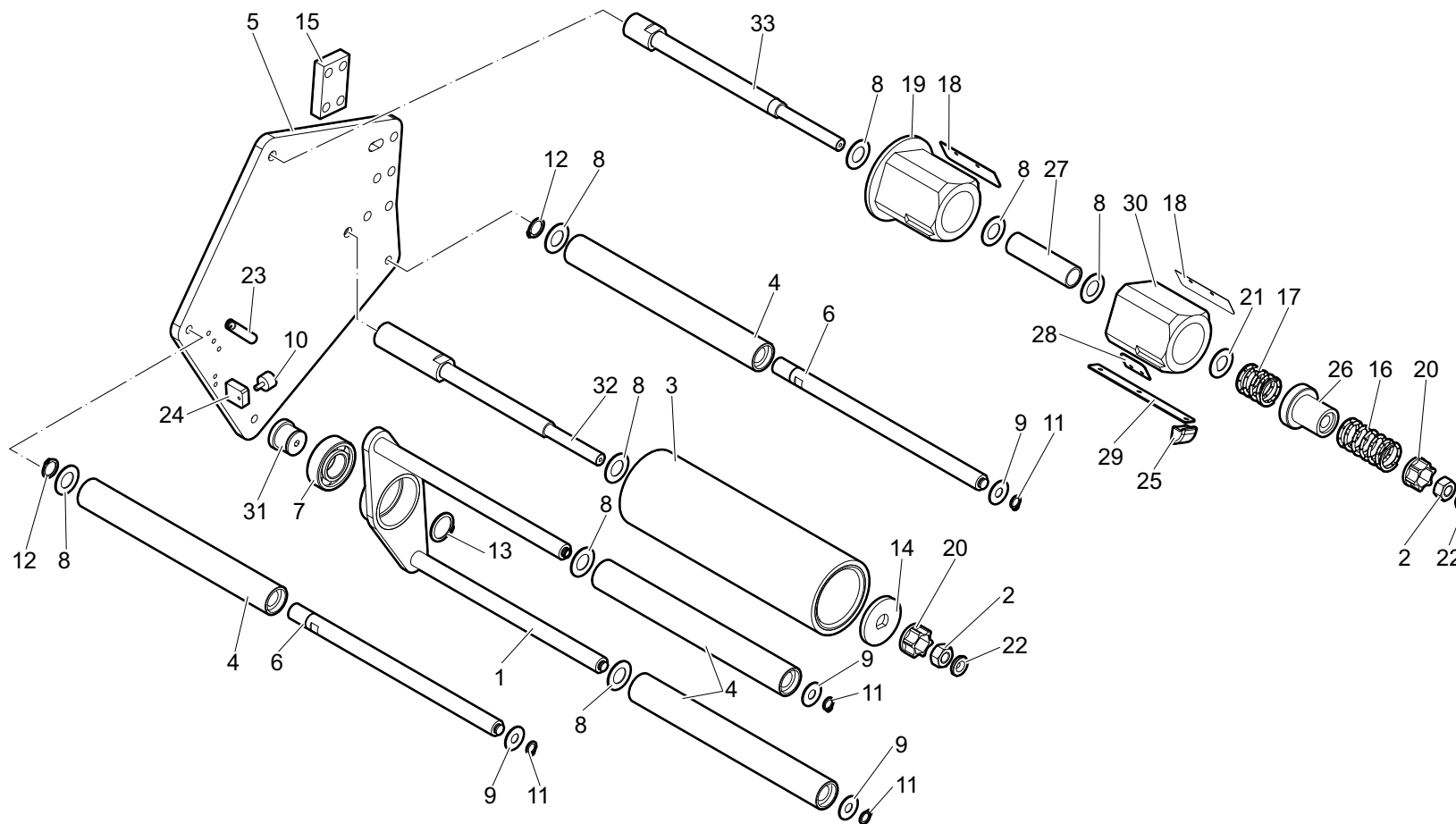
A1105_011

2/2

Variante rif. codice

32 5270300737

33 5270300738





Gruppo portabobina
Folienrollengruppe
Grupo portabobina

Spool carriage
Groupe porte-bobine

Macchina
Maschine
Máquina

Machine
Machine
Machine

WRAPPY 12S/12A

OPT

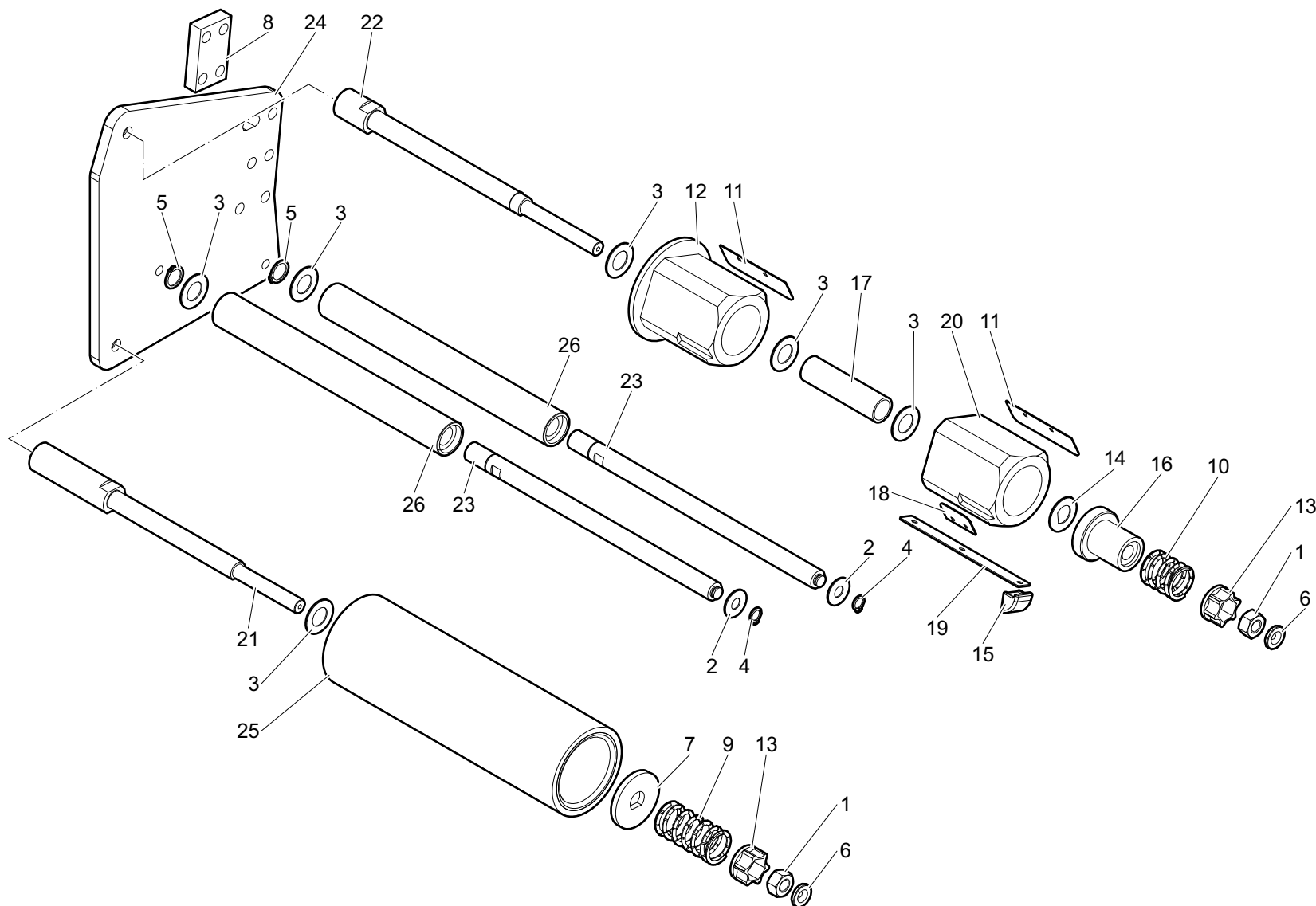
BOB.250

Tavola
Planche
Tabla

Table
Tafel

A1105_010

1/1



Variante rif. codice

| | |
|----|------------|
| 1 | 0000301421 |
| 2 | 0000613073 |
| 3 | 0000613044 |
| 4 | 0000644258 |
| 5 | 0000644264 |
| 6 | 0380680035 |
| 7 | 0380290105 |
| 8 | 0380300145 |
| 9 | 0380530115 |
| 10 | 0380530125 |
| 11 | 0380530554 |
| 12 | 0380540074 |
| 13 | 0380630044 |
| 14 | 0380680024 |
| 15 | 4460300001 |
| 16 | 4550300268 |
| 17 | 4550300271 |
| 18 | 5123300010 |
| 19 | 5123300011 |
| 20 | 5180300014 |
| 21 | 5270300737 |
| 22 | 5270300738 |
| 23 | 5270300739 |
| 24 | 5330300609 |
| 25 | 5651300297 |
| 26 | 5651300184 |



Gruppo pinza/taglio
Spannzangen/schneide-einheit
Grupo pinza/corte

Pliers/cutting unit
Groupe pince/deco upage

Macchina
Machine
Máquina

WRAPPY 12S/12A

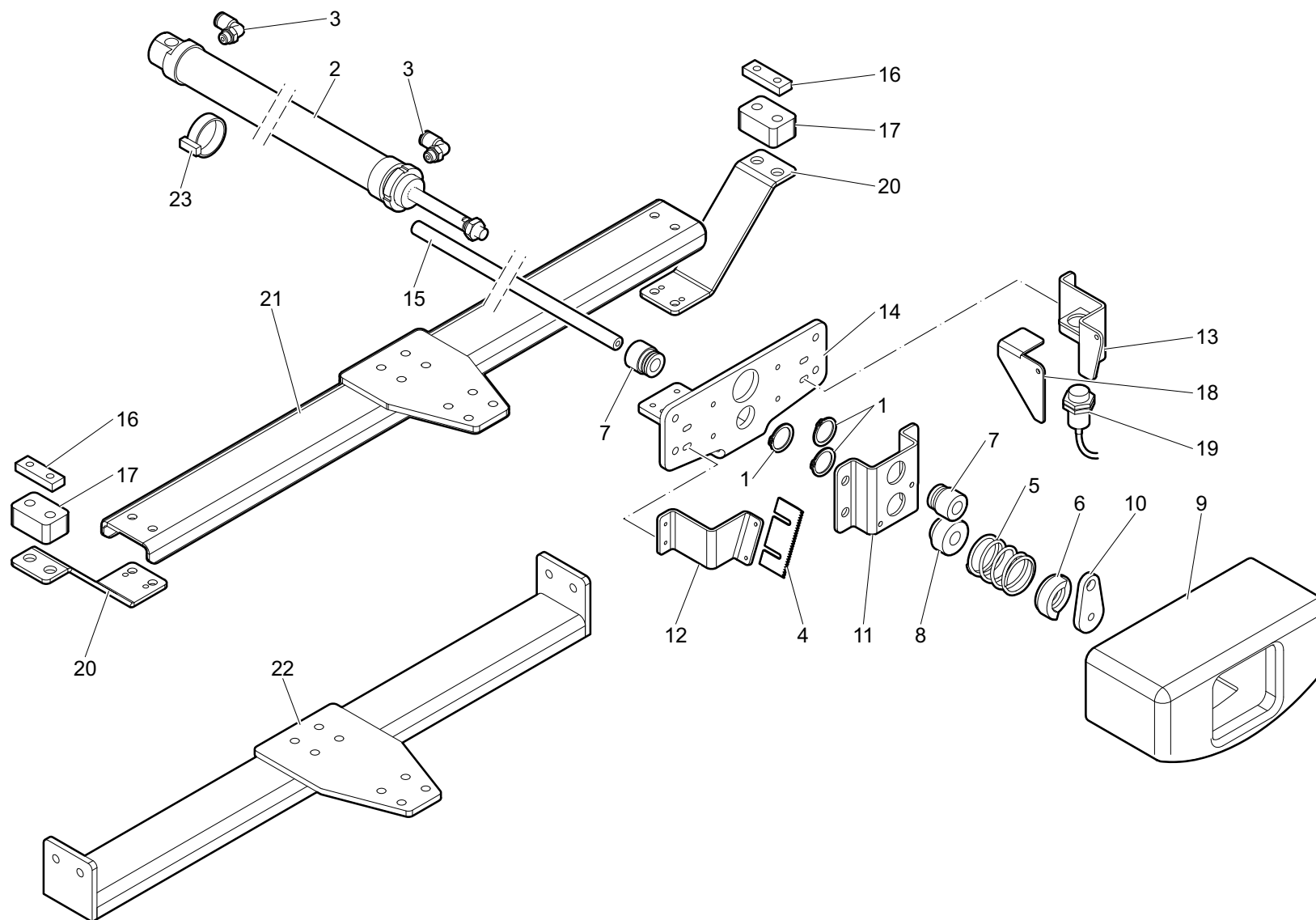
W:850/1100

Tavola
Planche
Tabla

Table
Tafel

A1108_006

1/1

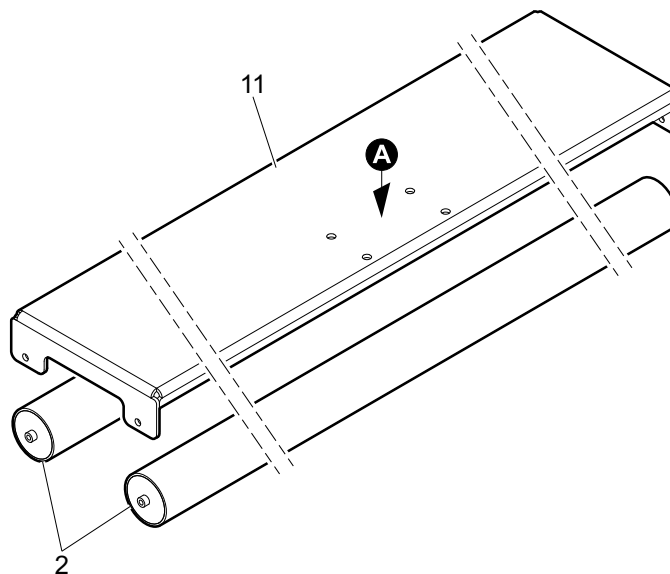
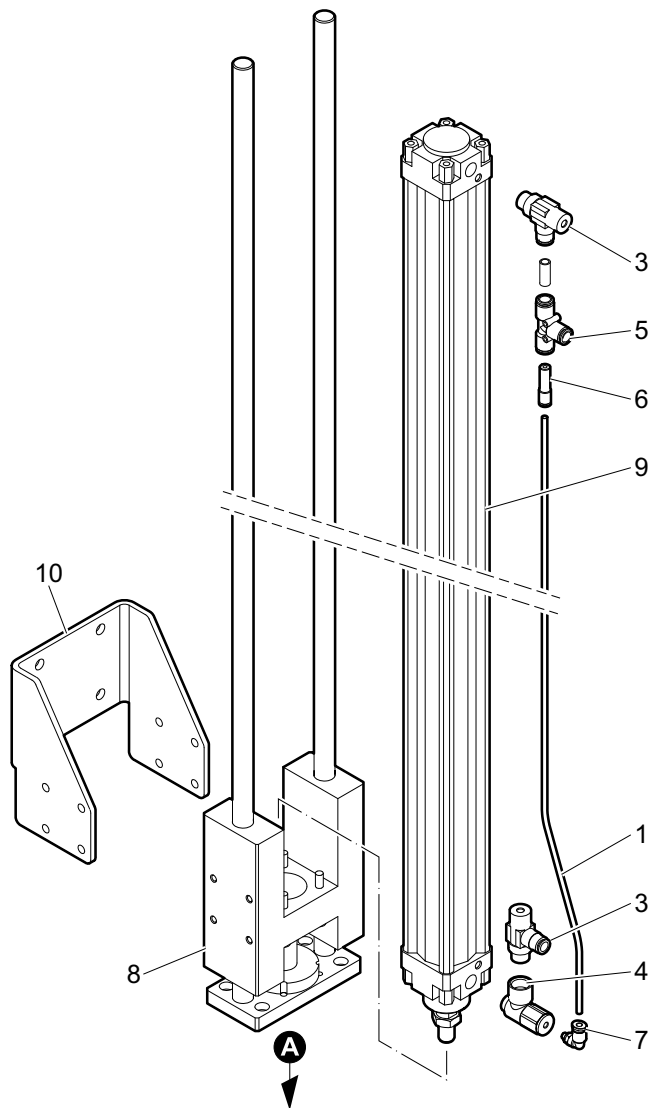


Variante rif. codice

| | |
|------------------|------------|
| 1 | 000644270 |
| 2 | 0001503171 |
| 3 | 0001905014 |
| 4 | 0380490014 |
| 5 | 0380530075 |
| 6 | 4040300060 |
| 7 | 4040300061 |
| 8 | 4040300062 |
| 9 | 4250301109 |
| 10 | 4940300980 |
| 11 | 4940300981 |
| 12 | 4940300982 |
| 13 | 5890301381 |
| 14 | 5890301382 |
| 15 | PROT_63084 |
| W:850 16 | 5330300608 |
| W:850 17 | 4550300275 |
| 18 | 4940300983 |
| 19 | 0001300299 |
| W:850 20 | 5830300476 |
| W:850 21 | 5740300620 |
| W:1100 22 | 5740300635 |
| 23 | 0001301195 |



| | | | | | |
|---|---|---------------------------------|-------------------------------|-----------------------|------------|
| Gruppo pressore Niederhaltergruppe Grupo presor | Pressure platen unit Groupe presseur | Macchina Maschine Máquina | Machine Machine Machine | WRAPPY 12S/12A | |
| L:600/800 | | Tavola Planche Tabla | Table Tafel | A1108_007 | 1/1 |



Variante rif. codice

| | | |
|--------------|----|------------|
| | 1 | 0000640277 |
| L:600 | 2 | 0000641453 |
| L:800 | 2 | 0000641087 |
| | 3 | 0001508834 |
| | 4 | 0001509313 |
| | 5 | 0001900078 |
| | 6 | 0001900126 |
| | 7 | 0001904353 |
| | 8 | 00L0042685 |
| | 9 | 00L0042760 |
| | 10 | 5740300630 |
| L:600 | 11 | 5890301523 |
| L:800 | 11 | 5890301534 |



Impianto pneumatico
Pneumatische anlage
Instalacion neumatica

Pneumatic system
Circuit pneumatique

Macchina
Maschine
Máquina

Machine
Machine
Machine

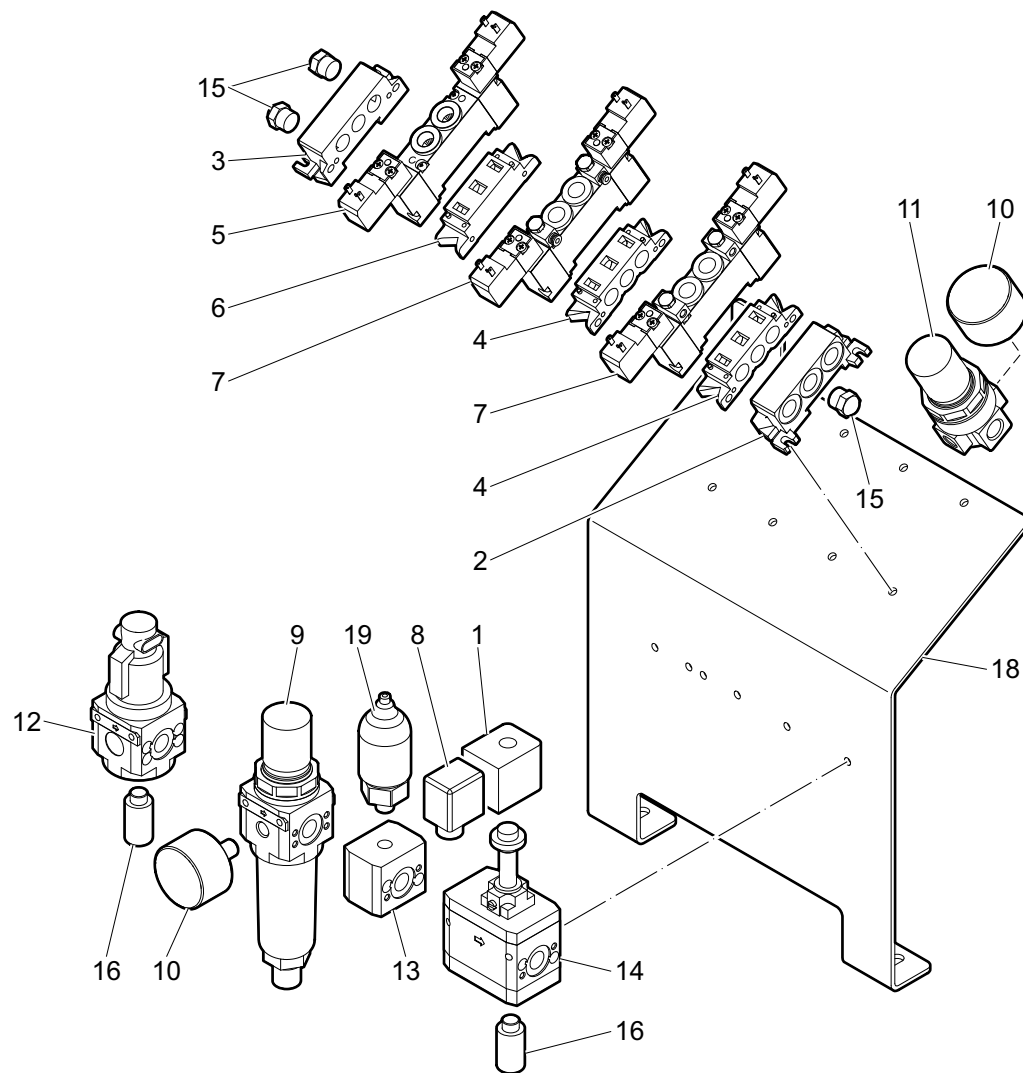
WRAPPY 12S/12A

Tavola
Planche
Tabla

Table
Tafel

A1108_009

1/1



Variante rif. codice

| | |
|----|------------|
| 1 | 0001301019 |
| 2 | 0001344464 |
| 3 | 0001344466 |
| 4 | 0001344467 |
| 5 | 0001344523 |
| 6 | 0001344557 |
| 7 | 0001344566 |
| 8 | 0001353240 |
| 9 | 0001500957 |
| 10 | 0001505030 |
| 11 | 0001508826 |
| 12 | 0001510013 |
| 13 | 0001510488 |
| 14 | 0001900086 |
| 15 | 0001908066 |
| 16 | 0001908230 |
| 18 | 4940301072 |
| 19 | 2010300001 |



Gruppo convogliatore (Rulli)
 Einheit förderer (Rollen)
 Grupo transportador (Rodillos)

Conveyor unit (Rollers)
 Groupe convoyeur (Rouleaux)

Macchina
 Maschine
 Máquina

Machine
 Machine

WRAPPY 12S/12A

OPT

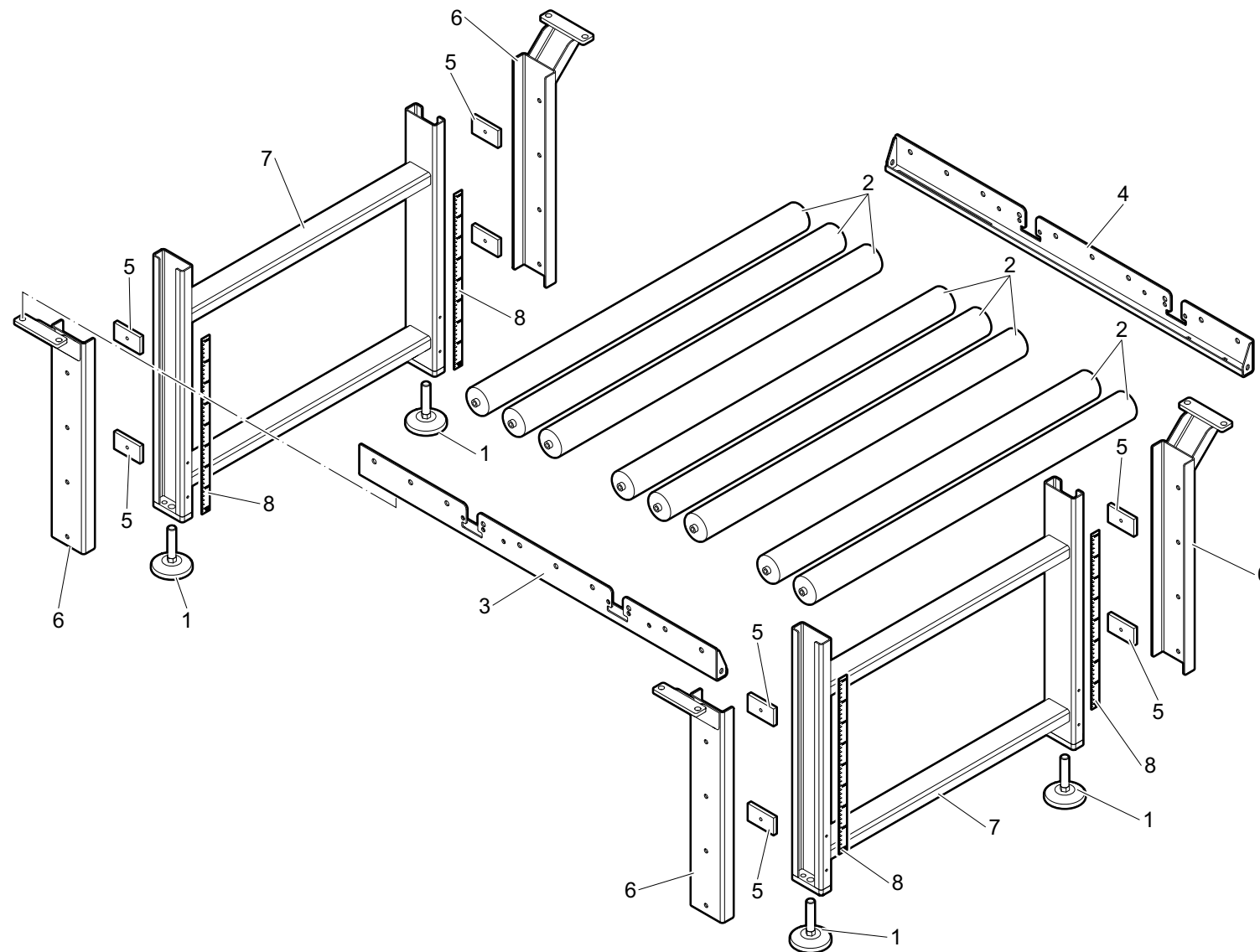
L:1000

Tavola
 Planche
 Tabla

Table
 Tafel

A1108_011

1/1

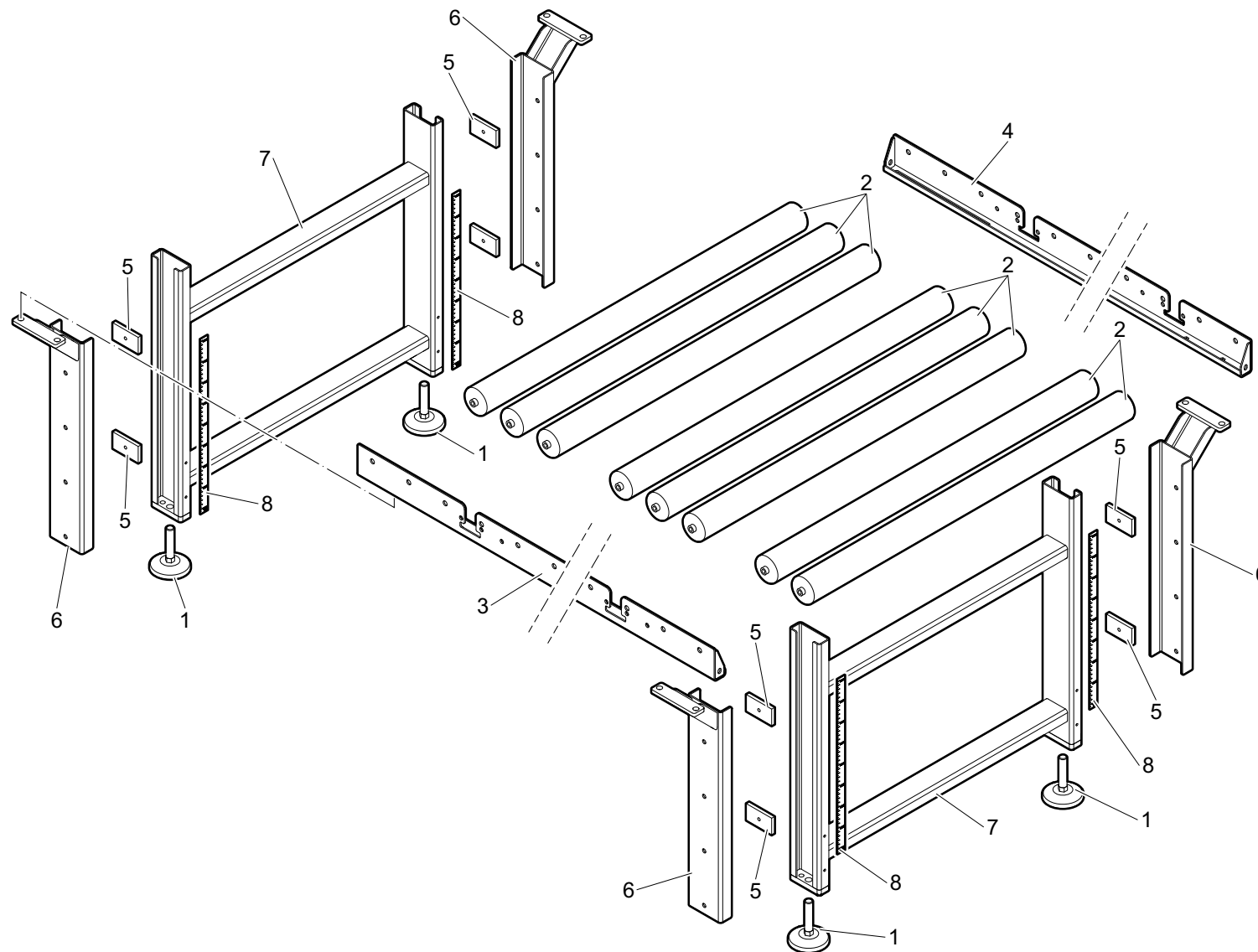


Variante rif. codice

| | |
|---|------------|
| 1 | 0000636584 |
| 2 | 0000641447 |
| 3 | 4610300385 |
| 4 | 4610300386 |
| 5 | 5330300546 |
| 6 | 5740300574 |
| 7 | 6040300468 |
| 8 | 5920300606 |



| | | | | | |
|---|--|---------------------------------|--------------------|-----------------------|------------|
| Gruppo convogliatore (Rulli) Einheit förderer (Rollen) Grupo transportador (Rodillos) | Conveyor unit (Rollers) Groupe convoyeur (Rouleaux) | Macchina Maschine Máquina | Machine Machine | WRAPPY 12S/12A | |
| OPT | L:2000 | Tavola Planche Tabla | Table Tafel | A1108_012 | 1/1 |



Variante rif. codice

| | |
|---|------------|
| 1 | 0000636584 |
| 2 | 0000641447 |
| 3 | 4610300389 |
| 4 | 4610300390 |
| 5 | 5330300546 |
| 6 | 5740300574 |
| 7 | 6040300468 |
| 8 | 5920300606 |



Kit targhette
Schild
Kit placas

Plate kit
Kit de plaquettes

Macchina
Maschine
Máquina

Machine
Machine
Machine

WRAPPY 12S/12A

Tavola
Planche
Tabla

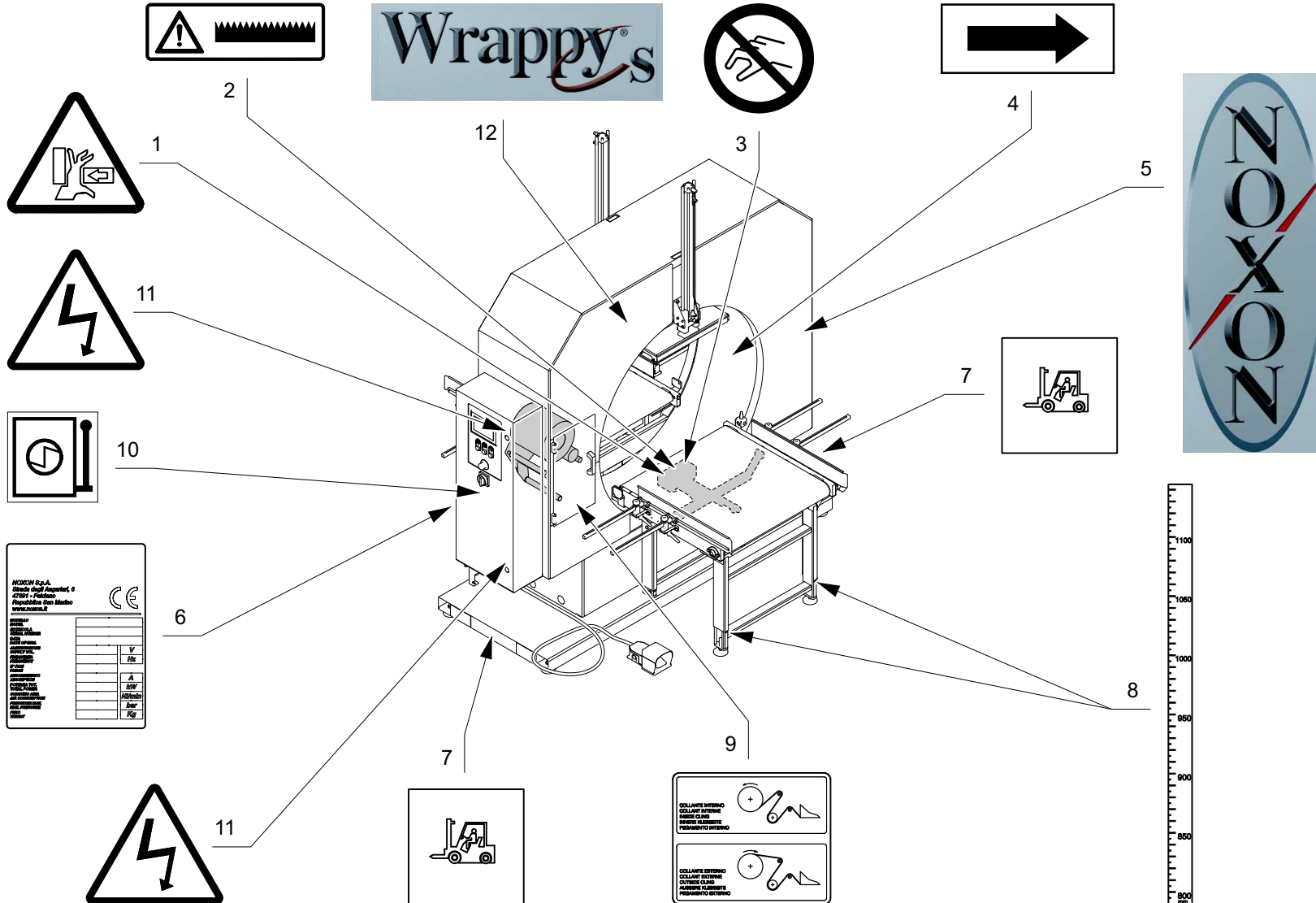
Table
Tafel

A1209_004

1/1

Variante rif. codice

| | |
|---------------|------------|
| 1 | 5920300682 |
| 2 | 0380810035 |
| 3 | 5920300200 |
| 4 | 0380810270 |
| 5 | 5920300667 |
| 6 | 0380810425 |
| 7 | 5920300101 |
| 8 | 5920300606 |
| OPT 9 | 5920300686 |
| 9 | 5920300687 |
| 10 | 5920300646 |
| 11 | 0381810287 |
| 12S 12 | 5920300729 |
| 12A 12 | 5920300731 |



NOXON S.p.A.
Strada 10/A - 36012 - Fregene
Repubblica Democratica Italiana
www.noxon.it

| | |
|----------------|--|
| CE | |
| EMC | |
| EN 60204-1 | |
| EN 60959 | |
| EN 61010-1 | |
| EN 61558-2-1 | |
| EN 61558-2-2 | |
| EN 61558-2-3 | |
| EN 61558-2-4 | |
| EN 61558-2-5 | |
| EN 61558-2-6 | |
| EN 61558-2-7 | |
| EN 61558-2-8 | |
| EN 61558-2-9 | |
| EN 61558-2-10 | |
| EN 61558-2-11 | |
| EN 61558-2-12 | |
| EN 61558-2-13 | |
| EN 61558-2-14 | |
| EN 61558-2-15 | |
| EN 61558-2-16 | |
| EN 61558-2-17 | |
| EN 61558-2-18 | |
| EN 61558-2-19 | |
| EN 61558-2-20 | |
| EN 61558-2-21 | |
| EN 61558-2-22 | |
| EN 61558-2-23 | |
| EN 61558-2-24 | |
| EN 61558-2-25 | |
| EN 61558-2-26 | |
| EN 61558-2-27 | |
| EN 61558-2-28 | |
| EN 61558-2-29 | |
| EN 61558-2-30 | |
| EN 61558-2-31 | |
| EN 61558-2-32 | |
| EN 61558-2-33 | |
| EN 61558-2-34 | |
| EN 61558-2-35 | |
| EN 61558-2-36 | |
| EN 61558-2-37 | |
| EN 61558-2-38 | |
| EN 61558-2-39 | |
| EN 61558-2-40 | |
| EN 61558-2-41 | |
| EN 61558-2-42 | |
| EN 61558-2-43 | |
| EN 61558-2-44 | |
| EN 61558-2-45 | |
| EN 61558-2-46 | |
| EN 61558-2-47 | |
| EN 61558-2-48 | |
| EN 61558-2-49 | |
| EN 61558-2-50 | |
| EN 61558-2-51 | |
| EN 61558-2-52 | |
| EN 61558-2-53 | |
| EN 61558-2-54 | |
| EN 61558-2-55 | |
| EN 61558-2-56 | |
| EN 61558-2-57 | |
| EN 61558-2-58 | |
| EN 61558-2-59 | |
| EN 61558-2-60 | |
| EN 61558-2-61 | |
| EN 61558-2-62 | |
| EN 61558-2-63 | |
| EN 61558-2-64 | |
| EN 61558-2-65 | |
| EN 61558-2-66 | |
| EN 61558-2-67 | |
| EN 61558-2-68 | |
| EN 61558-2-69 | |
| EN 61558-2-70 | |
| EN 61558-2-71 | |
| EN 61558-2-72 | |
| EN 61558-2-73 | |
| EN 61558-2-74 | |
| EN 61558-2-75 | |
| EN 61558-2-76 | |
| EN 61558-2-77 | |
| EN 61558-2-78 | |
| EN 61558-2-79 | |
| EN 61558-2-80 | |
| EN 61558-2-81 | |
| EN 61558-2-82 | |
| EN 61558-2-83 | |
| EN 61558-2-84 | |
| EN 61558-2-85 | |
| EN 61558-2-86 | |
| EN 61558-2-87 | |
| EN 61558-2-88 | |
| EN 61558-2-89 | |
| EN 61558-2-90 | |
| EN 61558-2-91 | |
| EN 61558-2-92 | |
| EN 61558-2-93 | |
| EN 61558-2-94 | |
| EN 61558-2-95 | |
| EN 61558-2-96 | |
| EN 61558-2-97 | |
| EN 61558-2-98 | |
| EN 61558-2-99 | |
| EN 61558-2-100 | |



